

## Linear guide

Adopt advanced production technology to ensure high precision and long life, suitable for various precision machinery and equipment.

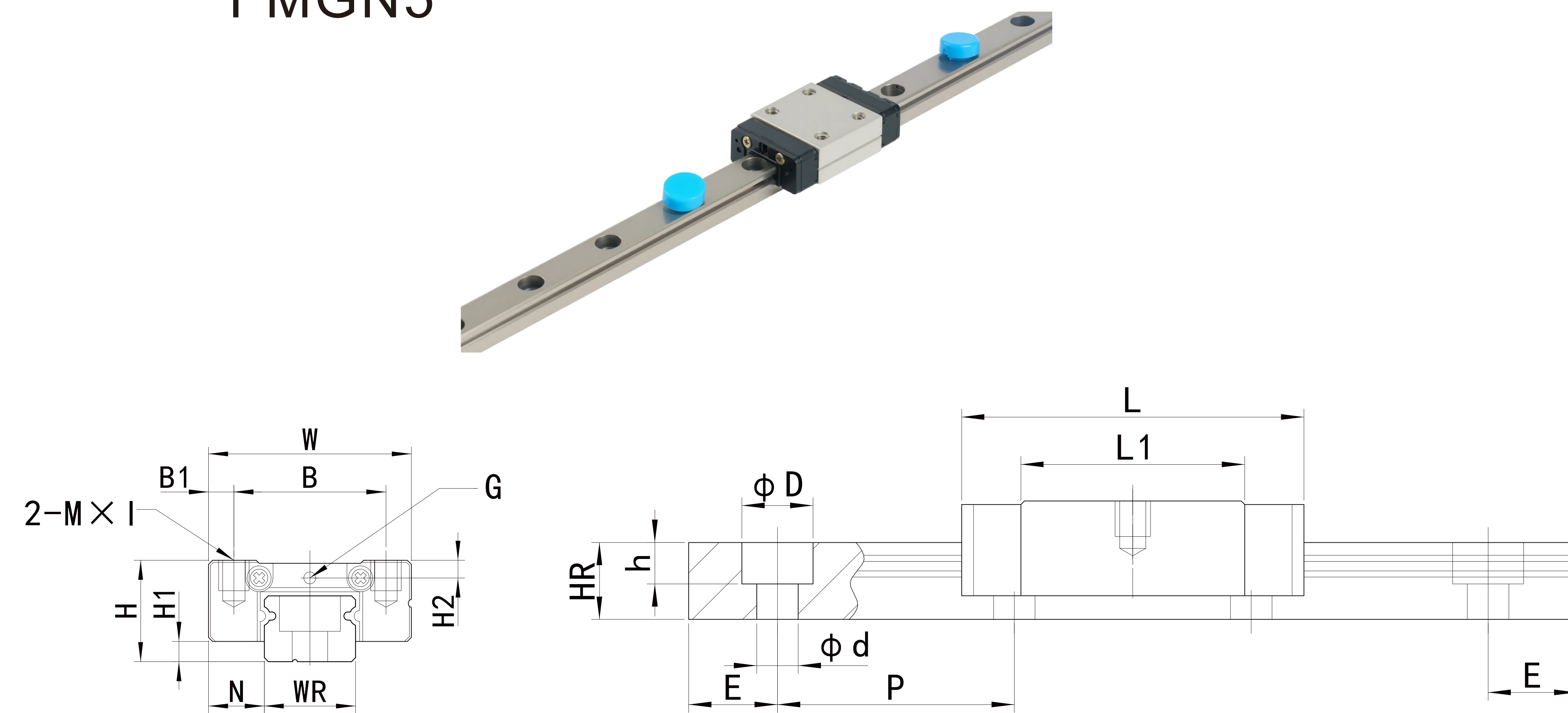
## Fuyu linear guide rail Available in a wide range of sizes and accuracy levels

Provide a variety of size specifications, from micro to large, C, H, P and other precision levels can be selected to meet different application needs, from raw materials to finished products, each process has undergone strict quality testing to ensure high reliability of products.



## Description

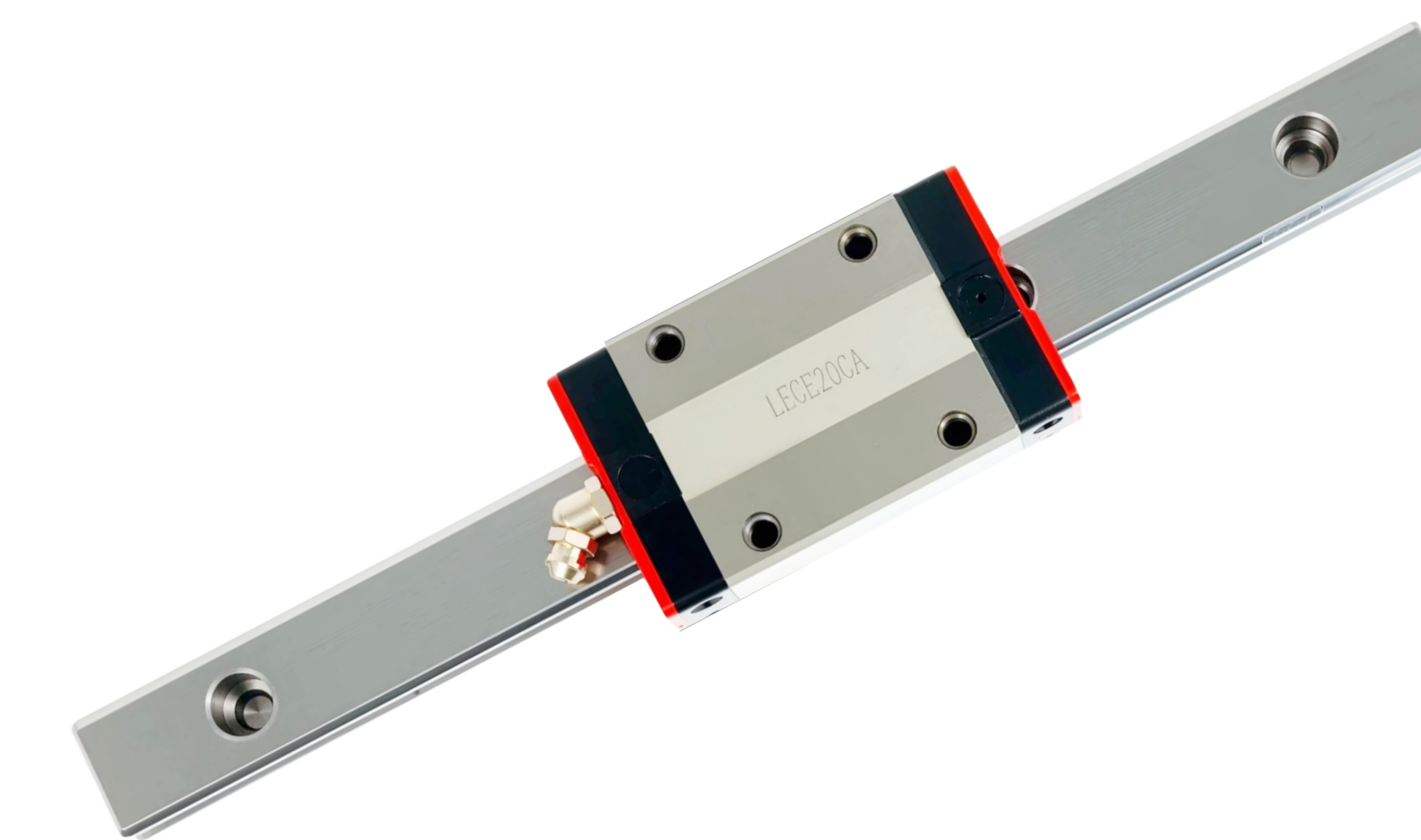
### FMGN5



## Micro Linear Guide Rail

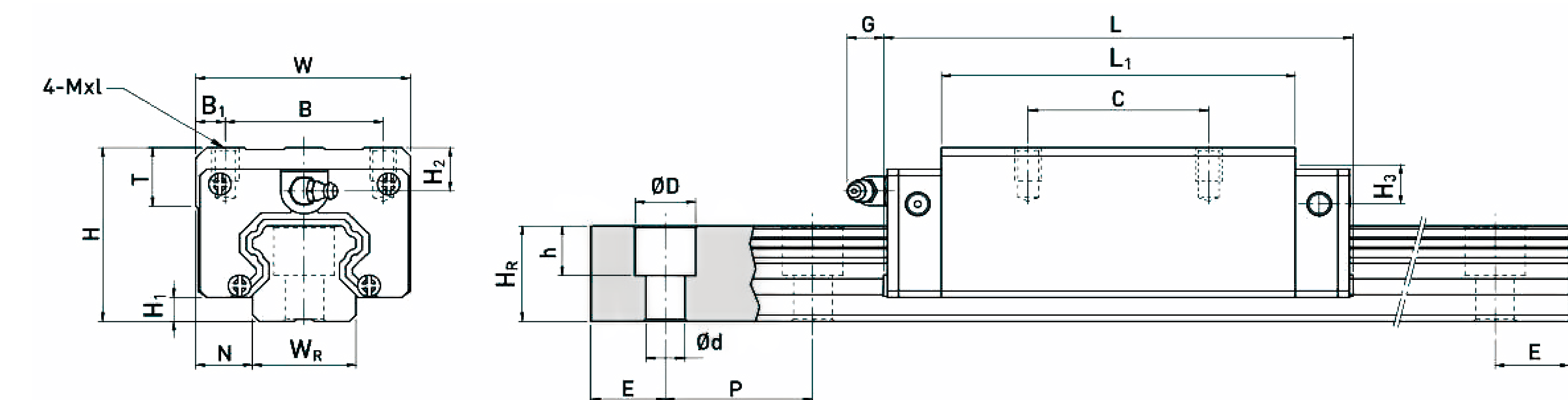
- Precision manufacturing process, high precision
- Small size, light weight, space saving
- The structure is strong and can withstand large loads
- Reduce friction
- Suitable for high-speed automation equipment.
- Easy to install, designed to simplify installation and commissioning.

### FEGH-20



### FEG-Low Assembly Ball Linear Guide Rail

- High rigidity
- Manufacturing process and material optimization ensure high motion accuracy
- The guide rail and slide block are preassembled into modular units, reducing on-site installation steps and assembly errors.
- Reduce friction
- Suitable for high-speed automation equipment.
- Easy to install, designed to simplify installation and commissioning.

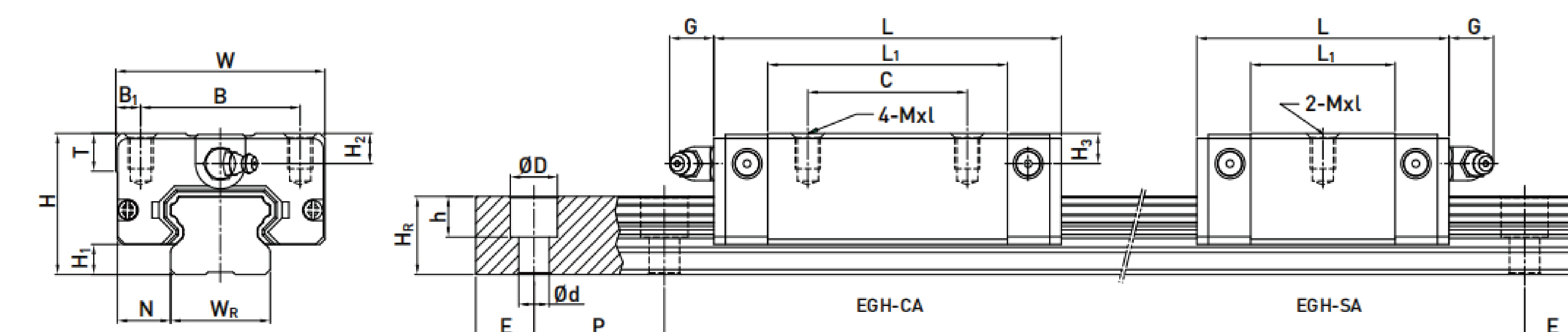


### FHGH-20



### FHG-High Assembly Ball Linear Guide Rail

- Non-interchangeable linear guide model
- High rigidity and load capacity
- Easy to install
- Long life and low maintenance
- Deformation resistance
- The ball rolling friction coefficient is very small, the transmission efficiency can reach more than 90%, suitable for high-speed reciprocating movement.



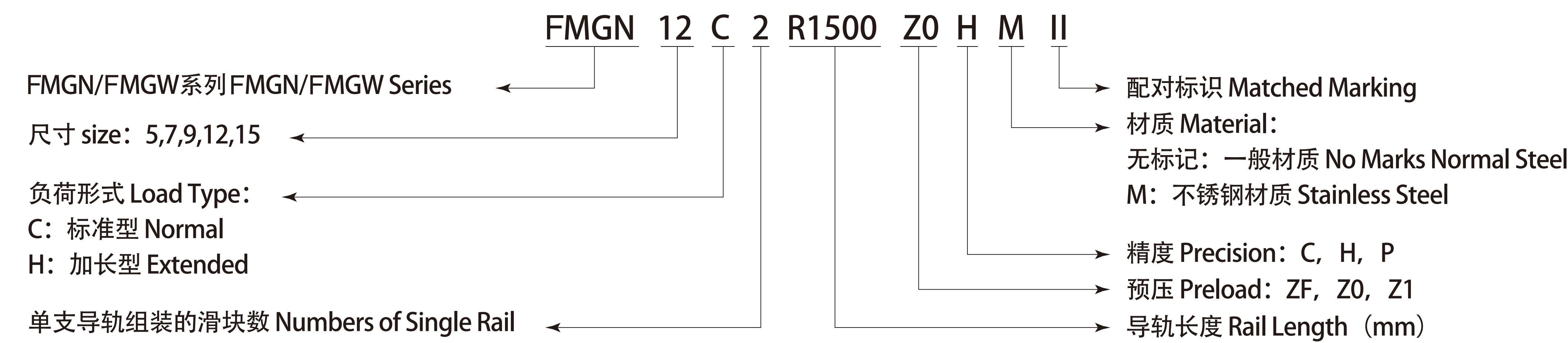
# LINEAR GUIDE RAIL

## Micro Linear Rail

微型直线导轨

产品型号

Model

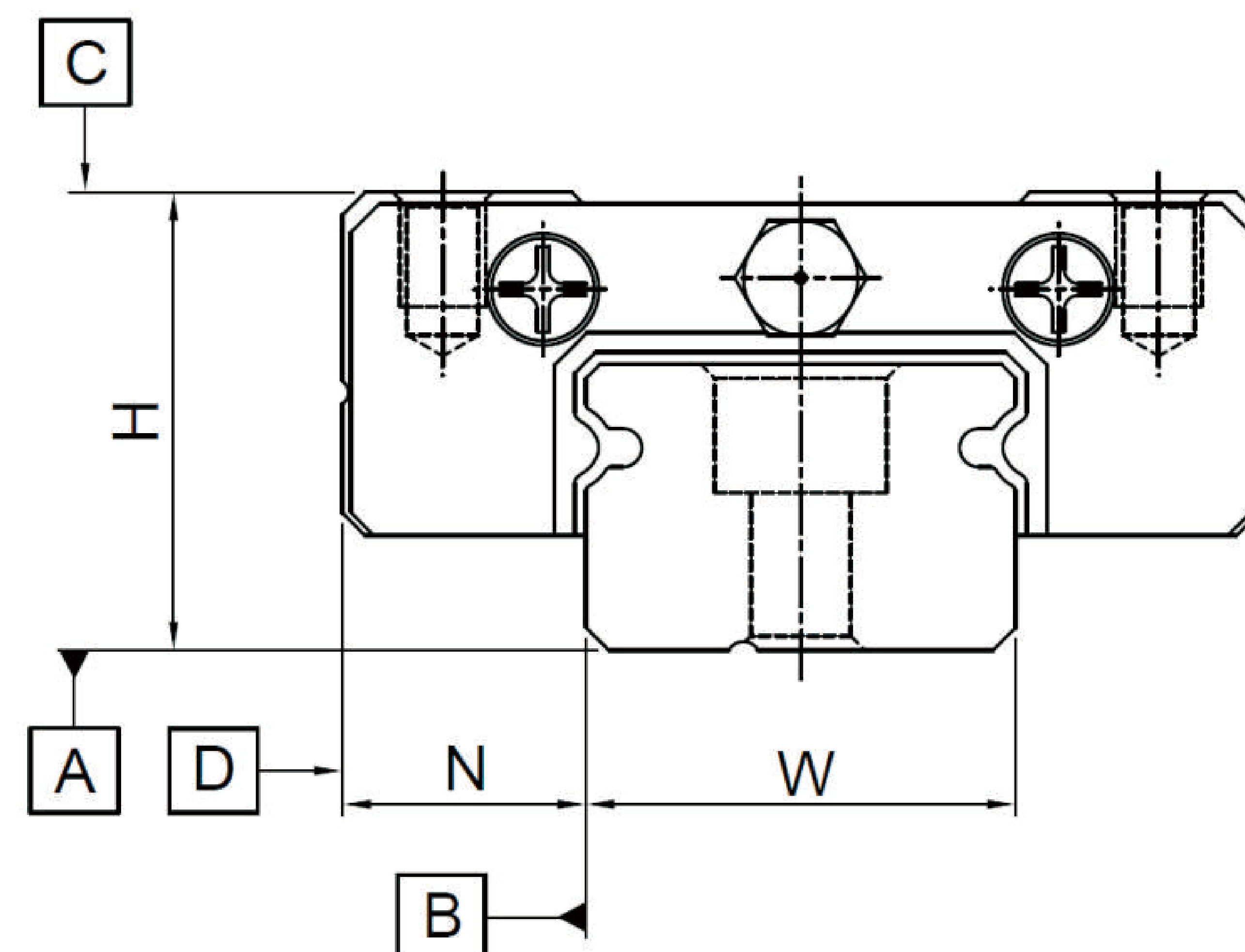


Precision Grade

The precision of FMGN/FMGW Series Micro Linear Rail is divided into 3 grades; The customers can choose Normal, High or Precise grade according to their requirements.

精度等级

FMGN/FMGW系列微型直线导轨的精度等级，分为普通、高、精密级共三级，客户可按照设计精度需求选用适合精度。



You can find the assembly size in the below form (Unit: mm)

1、组合尺寸精度见下表 (单位: mm)

精度等级 Precision Grade	普通级 (C) Common	高级 (H) High	精密级 (P) Precise
Dimension Deviation of Height H	± 0.04	± 0.02	± 0.01
宽度N的容许尺寸误差 Dimension Deviation of Width N	± 0.04	± 0.025	± 0.015
成对高度H的相互误差 Mutual Deviation of Coupled Height H	0.03	0.015	0.007
成对宽度N的相互误差 Mutual Deviation of Coupled Width N	0.03	0.02	0.01
滑块C面对导轨A面的行走平行度 Running Parallelism of Block C Side to Rail A Side	行走平行度见《行走平行精度表》 Please find in Precision Form of Running Parallelism.		
滑块D面对导轨B面的行走平行度 Running Parallelism of Block D Side to Rail B Side	行走平行度见《行走平行精度表》 Please find in Precision Form of Running Parallelism.		

Attention: Assembly Height H is measured according to the base level center of upper side on blocks. Assembly Width is measured according to base level center of lateral side on blocks.

注意: 组合高度H测量是以滑块上部基准面中心位置为准, 组合宽度N测量是以滑块侧边基准面中心位置为准。

Please find the running parallelism in the below form

2、行走平行精度如下表

导轨长度 Rail Length (mm)	精度等级 (μm) Precision Grade			导轨长度 Rail Length (mm)	精度等级 (μm) Precision Grade		
	(C)	(H)	(P)		(C)	(H)	(P)
50以下	12	6	2	800~1000	23	16	9
50~80	13	7	3	1000~1200	25	18	11
50~125	14	8	3.5	1200~1300	26	19	12
125~200	15	9	4	1300~1400	27	19	12
200~250	16	10	5	1400~1500	28	20	13
250~315	17	11	5	1500~1600	29	20	14
315~400	18	11	6	1600~1700	30	21	14
400~500	19	12	6	1700~1800	30	21	15
500~630	20	13	7	1800~1900	31	22	15
630~800	22	14	8	1900~2000	31	22	16

Preload

FMGN/FMGW series has 3 preload pressures; they are normal space, no preloading, light preloading. Please find the below form for the Preload Grade

预压力

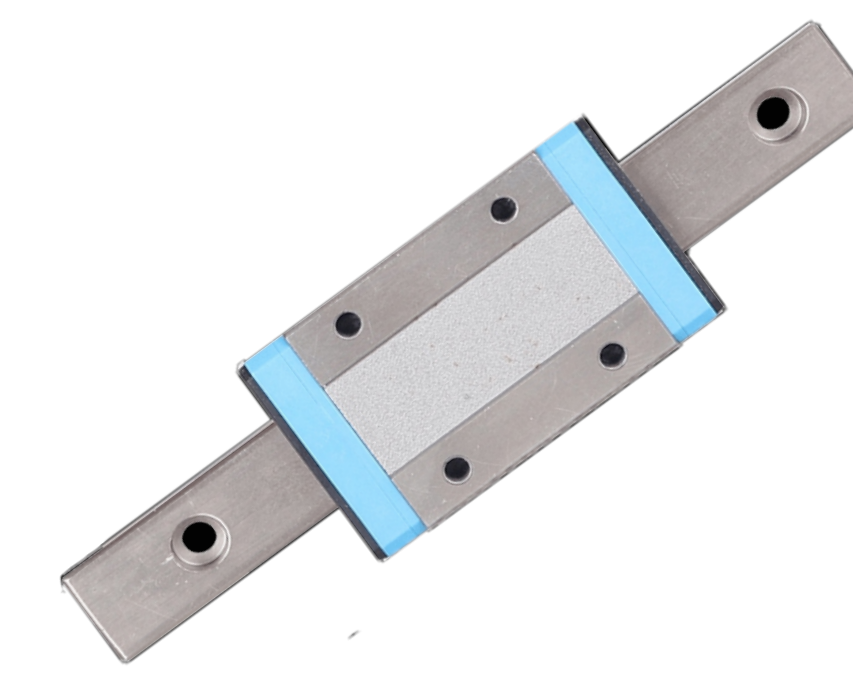
FMGN/FMGW系列提供普通间隙、无预压、轻预压三种预压力，预压等级见下表：

预压等级 Preload Grade	标记 Marks	预压力 Preload Pressure	适用精度 Applicable Precision
普通间隙 Normal Space	ZF	精密间隙 Precise Space 4~10 μm	C
无预压 No Preloading	Z0	0	C~P
轻预压 Light Preloading	Z1	0.02C	C~P

# LINER GUIDE

## FMGN-C/FMGN-H

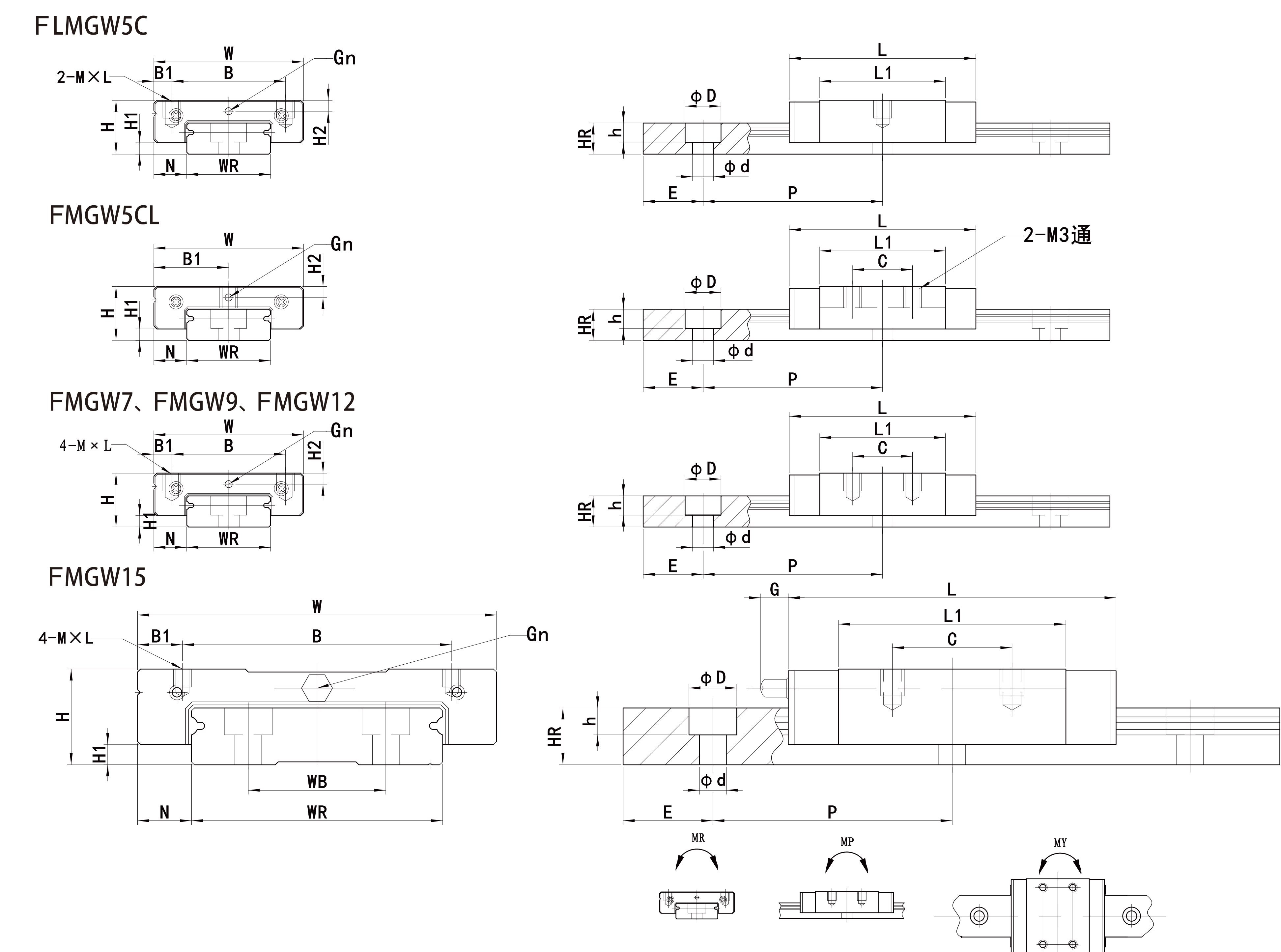
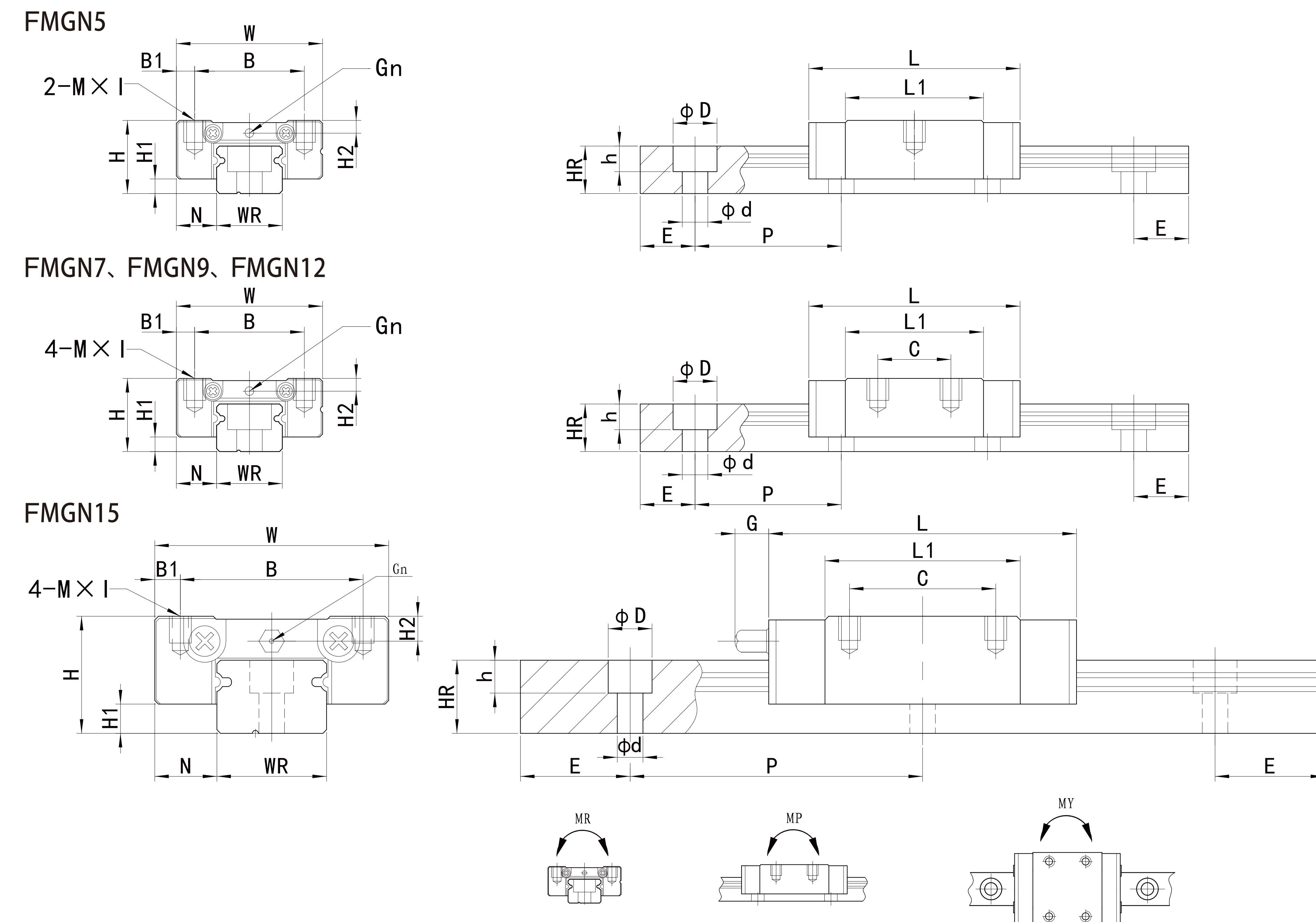
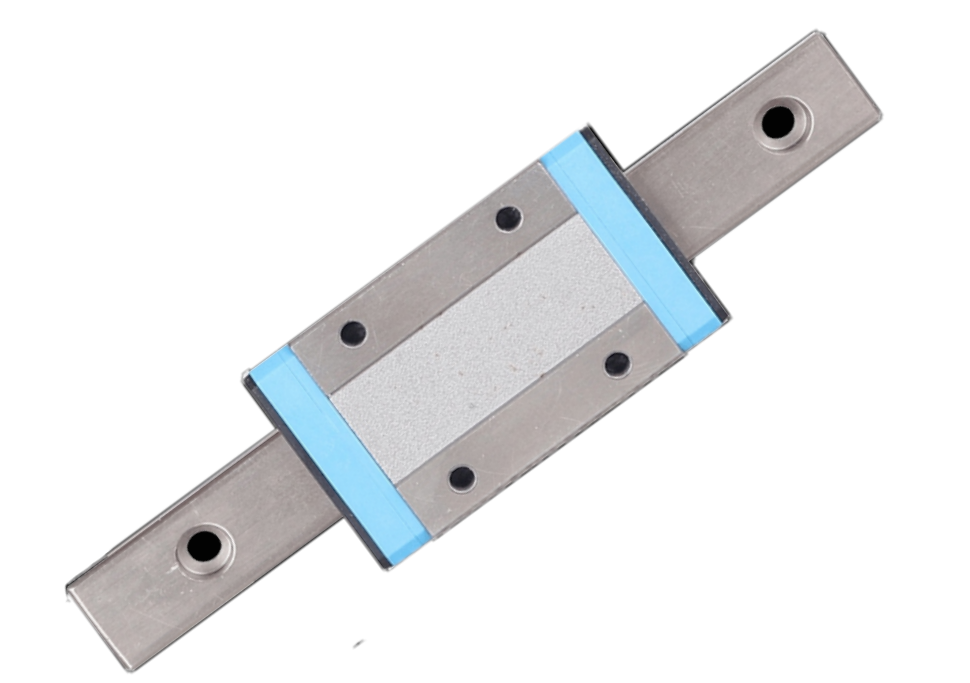
Micro Linear Rail



# LINER GUIDE

## FMGW-C/FMGW-H

Micro Linear Rail



型号 Model	组件尺寸 Components Size			滑块尺寸 Block Size				导轨尺寸 Rail Size					导轨的 固定螺 栓尺寸 Fixed Screw Size			基本 动额 定负荷 Basic Dynamic Load Rating			基本 静额 定负荷 Basic Static Flating			容许静力矩 Permissible Static Moment			重量Weight			
	H	H1	N	W	B	B1	C	L1	L	G	Gn	M×I	H2	WR	HR	D	h	d	P	E	(mm)	C(kN)	C0(kN)	MR N-m	MP N-m	MY N-m	滑块 Block kg	导轨 Rail kg/m
																					(mm)	C(kN)	C0(kN)	MR N-m	MP N-m	MY N-m	滑块 Block kg	导轨 Rail kg/m
FMGN5C	6	1.5	3.5	12	8	2	-	10	17	-	φ0.8	M2×1.5	1	5	3.6	3.6	0.8	2.4	15	5	M2×6	0.54	0.84	2	1.3	1.3	0.008	0.15
FMGN7C	8	1.5	5	17	12	2.5	8	13.5	22.5	-	φ1.2	M2×2.5	1.5	7	4.8	4.2	2.3	2.4	15	5	M2×6	0.98	1.24	4.70	2.84	2.84	0.010	0.22
FMGN7H							13	21.8	30.8													1.37	1.96	7.64	4.80	4.80	0.015	
FMGN9C	10	2	5.5	20	15	2.5	10	18.9	28.9	-	φ1.4	M3×3	1.8	9	6.5	6	3.5	3.5	20	7.5	M3×8	1.86	2.55	11.76	7.35	7.35	0.016	0.38
FMGN9H							16	29.9	39.9													2.55	4.02	19.60	18.62	18.62	0.026	
FMGN12C	13	3	7.5	27	20	3.5	15	21.7	34.7	-	φ2	M3×3.5	2.5	12	8	6	4.5	3.5	25	10	M3×8	2.84	3.92	25.48	13.72	13.72	0.034	0.65
FMGN12H							20	32.4	45.4													3.72	5.88	38.22	36.26	36.26	0.054	
FMGN15C	16	4	8.5	32	25	3.5	20	26.7	42.1	4.5	M3	M3×4	3	15	10	6	4.5	3.5	40	15	M3×10	4.61	5.59	45.08	21.56	21.56	0.059	1.06
FMGN15H							25	43.4	58.5													6.37	9.11	73.50	57.82	57.82	0.092	

注: 1kgf=9.81N

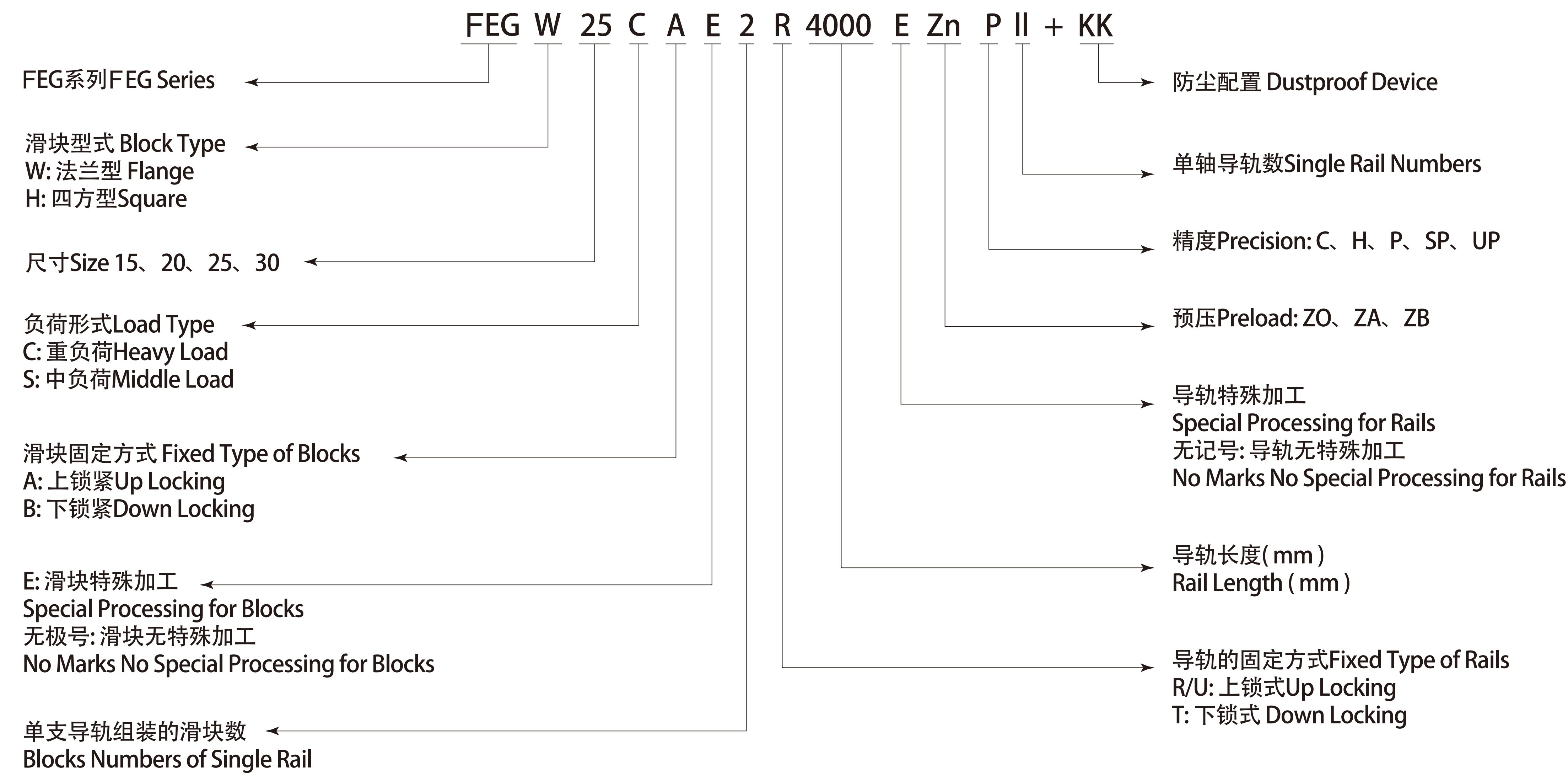
型号 Model	组件尺寸 Components Size			滑块尺寸 Block Size				导轨尺寸 Rail Size					导轨的 固定螺 栓尺寸 Fixed Screw Size			基本 动额 定负荷 Basic Dynamic Load Rating			基本 静额 定负荷 Basic Static Flating			容许静力矩 Permissible Static Moment			重量Weight				
	H	H1	N	W	B	B1	C	L1	L	G	Gn	M×I	H2	WR	WB	HR	D	h	d	P	E	(mm)	C(kN)	C0(kN)	MR N-m	MP N-m	MY N-m	滑块 Block kg	导轨 Rail kg/m
																					(mm)	C(kN)	C0(kN)	MR N-m	MP N-m	MY N-m	滑块 Block kg	导轨 Rail kg/m	
FMGW5C	6.5	1.5	3.5	17	13	2	-	14.1	20.5	-	φ0.8	M2.5×1.5	1	10	-	4	5.5	1.6	3	20	5	M2.5×7	0.68	1.18	5.5	2.7	2.7	0.016	0.34
FMGW5CL							-	8.5	6.5			M3通																	
FMGW7C	9	1.9	5.5	25	19	3	10	21	31.2	-	φ1.2	M3×3	1.85	14	-	5.2	6	3.2	3.5	30	10	M3×6	1.37	2.06	15.70	7.14	7.14	0.020	0.51
FMGW7H							19	30.8	41													1.77	3.14	23.45	15.53	15.53	0.029		
FMGW9C	12	2.9	6	30	21	4.5	12	27.5	39.3	-	φ1.2	M3×3	2.4	18	-	7	6	4.5	3.5	30	10	M3×8	2.75	4.12	40.12	18.96	18.96	0.040	0.91
FMGW9H							23	35	24	38.5	50.7											3.43	5.89	54.54	34.00	34.00	0.057		
FMGW12C	14	3.4	8	40	28	6	15	31.3	46.1	-	φ1.2	M3×3.6	2.8	24	-	8.5	8	4.5	4.5	40	15	M4×8	3.92	5.59	70.34	27.80	27.80	0.071	1.49
FMGW12H							28	45.6	60.4													5.10	8.24	102.70	57.37	57.37	0.103		
FMGW15C	16	3.4	9	60	45	7.5	20	38	54.8	5.2	M3	M4×4.2	3.2	42	23	9.5	8	4.5	4.5	40	15	M4×10	6.77	9.22	199.34	56.66	56.66	0.143	2.86
FMGW15H							35	57	73.8													8.93	13.38	299.01	122.60	122.60	0.215		

注: 1kgf=9.81N

# FEG-Low Assembly Ball Linear Guide Rail

FEG-低组装型滚珠线性导轨

## ◎ Type of Non-interchangeable Linear Rail



## ◎ Precision of No-interchangeable Linear Rail

Combined Precision Form Unit: mm

型号Model	LEG – 15, 20				
精度等级 Precision Grade	普通级Common (C)	高级High (H)	精密级Precise (P)	超精密级Super Precise (SP)	超高精密级Ultra Precise (UP)
高度H的容许尺寸误差 Dimension Deviation of Height H	± 0.1	± 0.03	0 -0.03	0 -0.015	0 -0.008
宽度N的容许尺寸误差 Dimension Deviation of Width N	± 0.1	± 0.03	0 -0.03	0 -0.015	0 -0.008
成对高度H的相互误差 Mutual Deviation of Coupled Height H	0.02	0.01	0.006	0.004	0.003
成对宽度N的相互误差 Mutual Deviation of Coupled Width N	0.02	0.01	0.006	0.004	0.003
滑块C面对导轨A面的行走平行度 Running Parallelism of Block C Side to Rail A Side	行走平行度 (见表1) Running Parallelism(Form 1)				
滑块D面对导轨B面的行走平行度 Running Parallelism of Block D Side to Rail B Side	行走平行度 (见表1) Running Parallelism(Form 1)				

型号Model	LEG – 25, 30				
精度等级 Precision Grade	普通级Common (C)	高级High (H)	精密级Precise (P)	超精密级Super Precise (SP)	超高精密级Ultra Precise (UP)
高度H的容许尺寸误差 Dimension Deviation of Height H	± 0.1	± 0.04	0 -0.04	0 -0.02	0 -0.01
宽度N的容许尺寸误差 Dimension Deviation of Width N	± 0.1	± 0.04	0 -0.04	0 -0.02	0 -0.01
成对高度H的相互误差 Mutual Deviation of Coupled Height H	0.02	0.015	0.007	0.005	0.003
成对宽度N的相互误差 Mutual Deviation of Coupled Width N	0.03	0.015	0.007	0.005	0.003
滑块C面对导轨A面的行走平行度 Running Parallelism of Block C Side to Rail A Side	行走平行度 (见表1) Running Parallelism(Form 1)				
滑块D面对导轨B面的行走平行度 Running Parallelism of Block D Side to Rail B Side	行走平行度 (见表1) Running Parallelism(Form 1)				

## ◎ Precision of interchangeable Linear Rail

Combined Precision Form Unit: mm

型号Model	LEG – 15, 20		
精度等级 Precision Grade	普通级Common (C)	高级High (H)	精密级Precise (P)
高度H的容许尺寸误差 Dimension Deviation of Height H	± 0.1	± 0.03	± 0.015
宽度N的容许尺寸误差 Dimension Deviation of Width N	± 0.1	± 0.03	± 0.015
成对高度H的相互误差 Mutual Deviation of Coupled Height H	0.02	0.01	0.006
成对宽度N的相互误差 Mutual Deviation of Coupled Width N	0.02	0.01	0.006
滑块C面对导轨A面的行走平行度 Running Parallelism of Block C Side to Rail A Side	行走平行度 (见表1) Running Parallelism(Form 1)		
滑块D面对导轨B面的行走平行度 Running Parallelism of Block D Side to Rail B Side	行走平行度 (见表1) Running Parallelism(Form 1)		

型号Model	LEG – 25, 30		
精度等级 Precision Grade	普通级Common (C)	高级High (H)	精密级Precise (P)
高度H的容许尺寸误差 Dimension Deviation of Height H	± 0.1	± 0.04	± 0.02
宽度N的容许尺寸误差 Dimension Deviation of Width N	± 0.1	± 0.04	± 0.02
成对高度H的相互误差 Mutual Deviation of Coupled Height H	0.02	0.015	0.007
成对宽度N的相互误差 Mutual Deviation of Coupled Width N	0.03	0.015	0.007
滑块C面对导轨A面的行走平行度 Running Parallelism of Block C Side to Rail A Side	行走平行度 (见表1) Running Parallelism(Form 1)		
滑块D面对导轨B面的行走平行度 Running Parallelism of Block D Side to Rail B Side	行走平行度 (见表1) Running Parallelism(Form 1)		

### 行走平行度 (表1)

### Running Parallelism(Form 1)

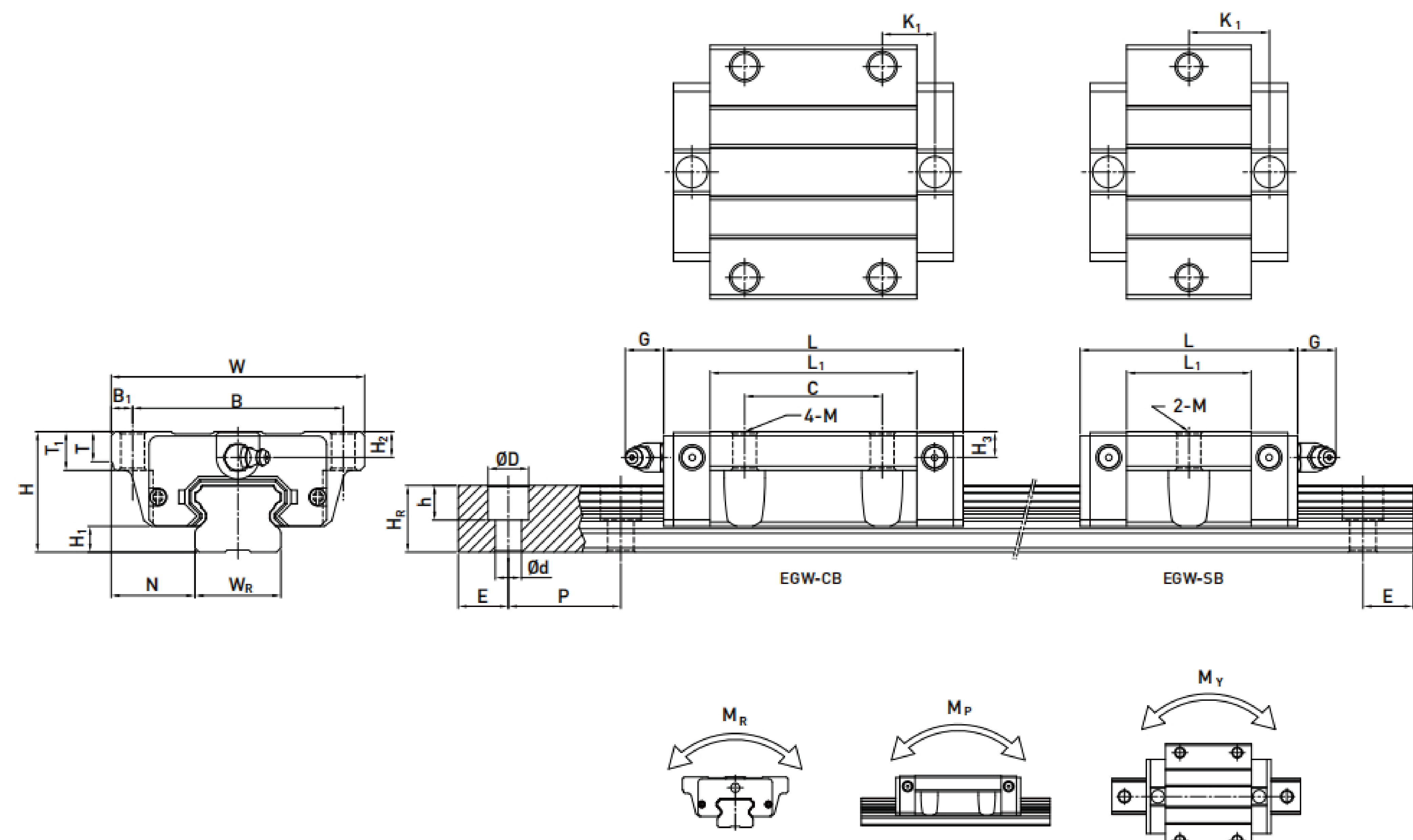
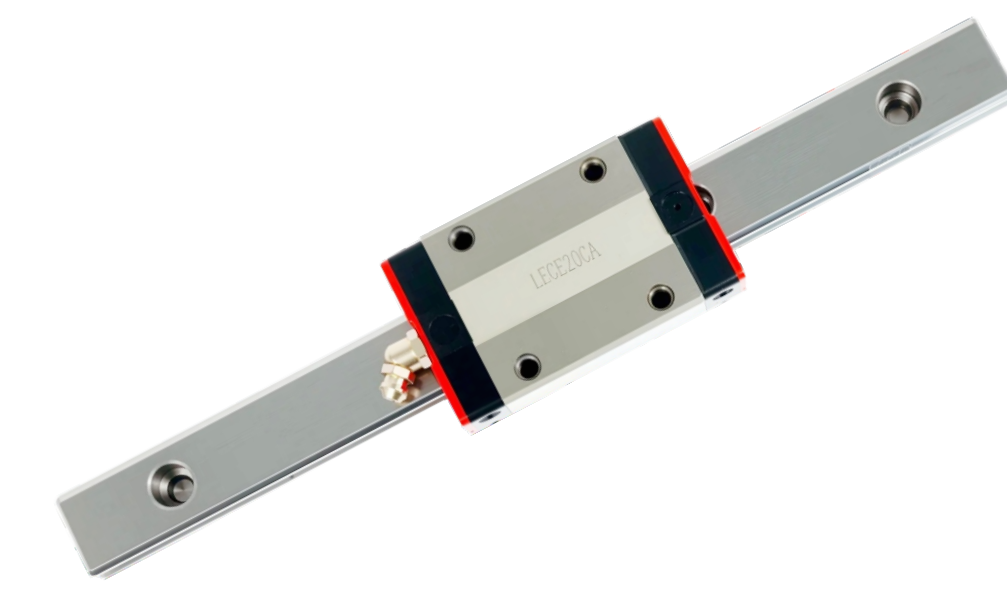
导轨长度 Rail Length (mm)	精度等级 Precision Grade				
	C	H	P	SP	UP
0 ~ 100	12	7	3	2	2
100 ~ 200	14	9	4	2	2
200 ~ 300	15	10	5	3	2
300 ~ 500	17	12	6	3	2
500 ~ 700	20	13	7	4	2
700 ~ 900	22	15	8	5	3
900 ~ 1100	24	16	9	6	3
1100 ~ 1500	26	18	11	7	4
1500 ~ 1900	28	20	13	8	4
1900 ~ 2500	31	22	15	10	5
2500 ~ 3100	33	25	18	11	6
3100 ~ 3600	36	27	20	14	7
3600 ~ 4000	37	28	21	15	7



# LINER GUIDE

## FEGW-SB/FEGW-CB

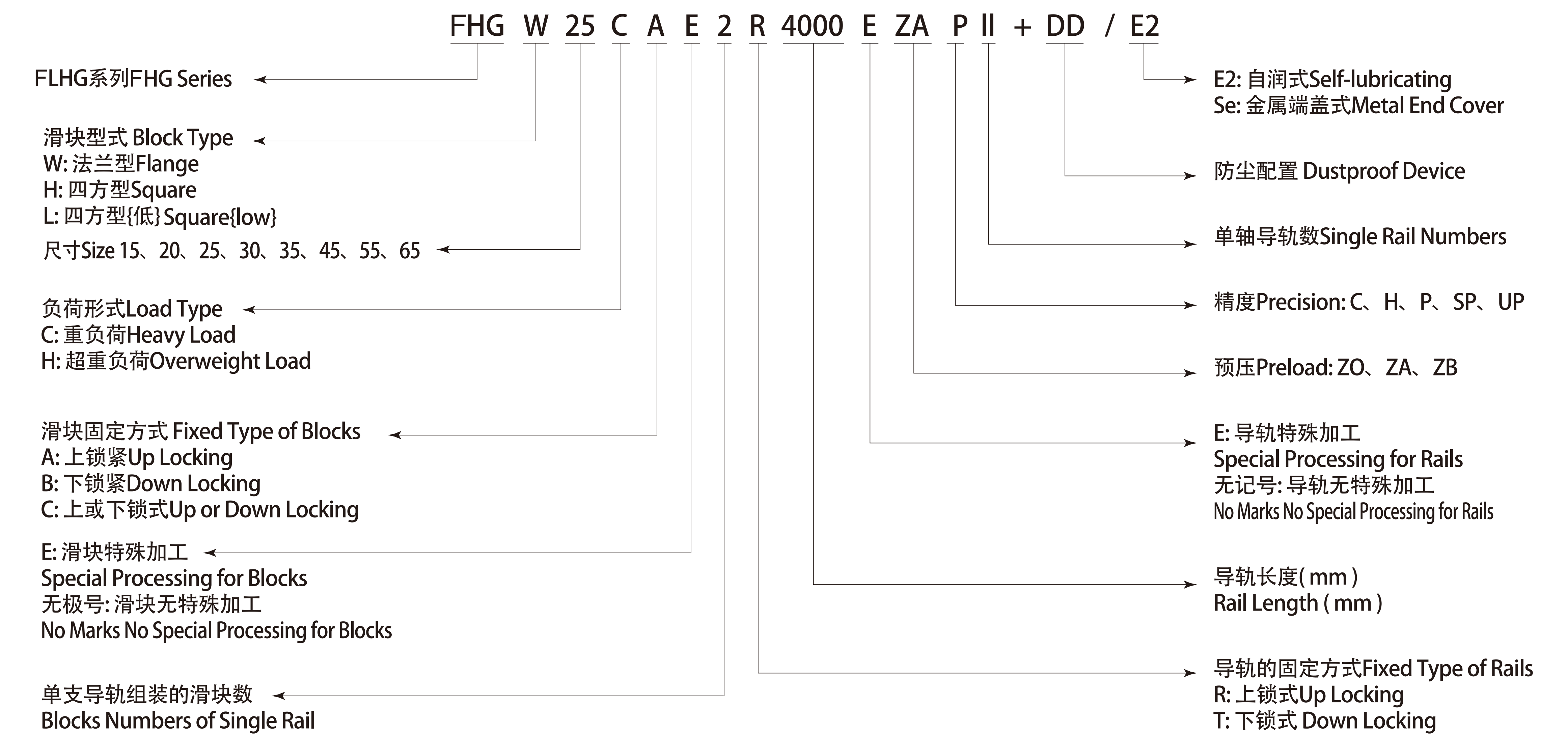
FEG-Low Assembly Ball Linear Guide Rail



# LHG High Assembly Ball Linear Rail

LHG-高组装型滚珠线性导轨

## ◎ Type of Non-interchangeable Linear Rail



## ◎ 非互换性直线导轨精度

## ◎ Precision of No-interchangeable Linear Rail

组合精度表 单位: mm

Combined Precision Form Unit: mm

型号 Model	组件尺寸 Components Size					滑块尺寸 Block Size					导轨尺寸 Rail Size										基本 静额定 负荷 Basic Static Load Rating	基本 动额定 负荷 Basic Dynamic Load Rating	容许静力矩 Permissible Static Moment			滑块 Block kg	导轨 Rail kg/m				
	H	H1	N	W	B	B1	C	L1	L	K1	G	M	T	H2	H3	W <sub>R</sub>	H <sub>R</sub>	D	h	d			P	E	(mm)			C(kN)	CO(kN)	W <sub>R</sub> KN-m	M <sub>b</sub> KN-m
FEGW15SB	24	4.5	18.5	52	41	5.5	-	23.1	40.1	14.8	5.7	04.5	5	7	5.5	6	15	12.5	7.5	4.5	60	20	M4X16	5.35	9.40	0.08	0.04	0.04	0.12	1.25	
FEGW15CB							26	39.8	56.8	10.15									6	5.3			3.5								M3X16
FEGW20SB	28	6	19.5	59	49	5	-	29	50	18.75	12	05.5	7	9	6	6	20	15.5	9.5	8.5	6	60	20	M5X16	7.23	12.74	0.13	0.06	0.06	0.19	2.08
FEGW20CB							32	48.1	69.1	12.3														10.31							
FEGW25SB	33	7	25	73	60	6.5	-	35.5	59.1	21.9	12	07	7.5	10	8	8	23	18	11	9	7	60	20	M6X20	11.40	19.50	0.23	0.12	0.12	0.35	2.67
FEGW25CB							35	59	82.6	16.15														16.27							
FEGW30SB	42	10	31	90	72	9	-	41.5	69.5	26.75	12	09	7	10	8	9	28	23	11	9	7	80	20	M6X25	16.42	28.10	0.40	0.21	0.21	0.62	4.35
FEGB30CB							40	70.1	98.1	21.05														23.70							

注: 1kgf=9.81N

型号Model	FLHG-15,20				
精度等级 Precision Grade	普通级Common (C)	高级High (H)	精密级Precise (P)	超精密级Super Precise (SP)	超精密级Ultra Precise (UP)
高度H的容许尺寸误差 Dimension Deviation of Height H	± 0.1	± 0.03	0 -0.03	0 -0.015	0 -0.008
宽度N的容许尺寸误差 Dimension Deviation of Width N	± 0.1	± 0.03	0 -0.03	0 -0.015	0 -0.008
成对高度H的相互误差Mutual Deviation of Coupled Height H	0.02	0.01	0.006	0.004	0.003
成对宽度N的相互误差Mutual Deviation of Coupled Width N	0.02	0.01	0.006	0.004	0.003
滑块C面对导轨A面的行走平行度Running Parallelism of Block C Side to Rail A Side	行走平行度 (见表2) Running Parallelism(Form 2)				
滑块D面对导轨B面的行走平行度Running Parallelism of Block D Side to Rail B Side	行走平行度 (见表2) Running Parallelism(Form 2)				

型号Model	FLHG-25,20,35				
精度等级 Precision Grade	普通级Common (C)	高级High (H)	精密级Precise (P)	超精密级Super Precise (SP)	超精密级Ultra Precise (UP)
高度H的容许尺寸误差 Dimension Deviation of Height H	± 0.1	± 0.04	0 -0.04	0 -0.02	0 -0.01
宽度N的容许尺寸误差 Dimension Deviation of Width N	± 0.1	± 0.04	0 -0.04	0 -0.02	0 -0.01
成对高度H的相互误差Mutual Deviation of Coupled Height H	0.02	0.015	0.007	0.005	0.003
成对宽度N的相互误差Mutual Deviation of Coupled Width N	0.03	0.015	0.007	0.005	0.003
滑块C面对导轨A面的行走平行度Running Parallelism of Block C Side to Rail A Side	行走平行度 (见表2) Running Parallelism(Form 2)				
滑块D面对导轨B面的行走平行度Running Parallelism of Block D Side to Rail B Side	行走平行度 (见表2) Running Parallelism(Form 2)				

型号Model	FHG-45, 55				
精度等级 Precision Grade	普通级Common (C)	高级High (H)	精密级Precise (P)	超精密级Super Precise (SP)	超高精密级Ultra Precise (UP)
高度H的容许尺寸误差 Dimension Deviation of Height H	± 0.1	± 0.05	0 -0.05	0 -0.03	0 -0.02
宽度N的容许尺寸误差 Dimension Deviation of Width N	± 0.1	± 0.05	0 -0.05	0 -0.03	0 -0.02
成对高度H的相互误差Mutual Deviation of Coupled Height H	0.03	0.015	0.007	0.005	0.003
成对宽度N的相互误差Mutual Deviation of Coupled Width N	0.03	0.02	0.001	0.007	0.003
滑块C面对导轨A面的行走平行度Running Parallelism of Block C Side to Rail A Side	行走平行度 (见表2) Running Parallelism(Form 2)				
滑块D面对导轨B面的行走平行度Running Parallelism of Block D Side to Rail B Side	行走平行度 (见表2) Running Parallelism(Form 2)				

型号Model	FHG-65				
精度等级 Precision Grade	普通级Common (C)	高级High (H)	精密级Precise (P)	超精密级Super Precise (SP)	超高精密级Ultra Precise (UP)
高度H的容许尺寸误差 Dimension Deviation of Height H	± 0.1	± 0.07	0 -0.07	0 -0.05	0 -0.03
宽度N的容许尺寸误差 Dimension Deviation of Width N	± 0.1	± 0.07	0 -0.07	0 -0.05	0 -0.03
成对高度H的相互误差Mutual Deviation of Coupled Height H	0.03	0.02	0.01	0.007	0.005
成对宽度N的相互误差Mutual Deviation of Coupled Width N	0.03	0.025	0.015	0.01	0.007
滑块C面对导轨A面的行走平行度Running Parallelism of Block C Side to Rail A Side	行走平行度 (见表2) Running Parallelism(Form 2)				
滑块D面对导轨B面的行走平行度Running Parallelism of Block D Side to Rail B Side	行走平行度 (见表2) Running Parallelism(Form 2)				

◎ Precision of interchangeable Linear Rail

◎ 互换性直线导轨精度

Combined Precision Form Unit: mm

组合精度表 单位: mm

型号Model	FEG-15, 20		
精度等级 Precision Grade	普通级Common (C)	高级High (H)	精密级Precise (P)
高度H的容许尺寸误差 Dimension Deviation of Height H	± 0.1	± 0.03	± 0.015
宽度N的容许尺寸误差 Dimension Deviation of Width N	± 0.1	± 0.03	± 0.015
成对高度H的相互误差 Mutual Deviation of Coupled Height H	0.02	0.01	0.006
成对宽度N的相互误差 Mutual Deviation of Coupled Width N	0.02	0.01	0.006
滑块C面对导轨A面的行走平行度 Running Parallelism of Block C Side to Rail A Side	行走平行度 (见表2) Running Parallelism(Form 2)		
滑块D面对导轨B面的行走平行度 Running Parallelism of Block D Side to Rail B Side	行走平行度 (见表2) Running Parallelism(Form 2)		

型号Model	FHG-25, 20, 35		
精度等级 Precision Grade	普通级Common (C)	高级High (H)	精密级Precise (P)
高度H的容许尺寸误差 Dimension Deviation of Height H	± 0.1	± 0.04	± 0.02
宽度N的容许尺寸误差 Dimension Deviation of Width N	± 0.1	± 0.04	± 0.02
成对高度H的相互误差 Mutual Deviation of Coupled Height H	0.02	0.015	0.007
成对宽度N的相互误差 Mutual Deviation of Coupled Width N	0.03	0.015	0.007
滑块C面对导轨A面的行走平行度 Running Parallelism of Block C Side to Rail A Side	行走平行度 (见表2) Running Parallelism(Form 2)		
滑块D面对导轨B面的行走平行度 Running Parallelism of Block D Side to Rail B Side	行走平行度 (见表2) Running Parallelism(Form 2)		

◎ Precision of interchangeable Linear Rail

◎ 互换性直线导轨精度

Single piece Precision Form

单出件精度表 单位: mm

型号Model	FHG-45, 55		
精度等级 Precision Grade	普通级Common (C)	高级High (H)	精密级Precise (P)
高度H的容许尺寸误差 Dimension Deviation of Height H	± 0.1	± 0.05	± 0.025
宽度N的容许尺寸误差 Dimension Deviation of Width N	± 0.1	± 0.05	± 0.025
成对高度H的相互误差 Mutual Deviation of Coupled Height H	0.03	0.015	0.007
成对宽度N的相互误差 Mutual Deviation of Coupled Width N	0.03	0.02	0.01
滑块C面对导轨A面的行走平行度 Running Parallelism of Block C Side to Rail A Side	行走平行度 (见表2) Running Parallelism(Form 2)		
滑块D面对导轨B面的行走平行度 Running Parallelism of Block D Side to Rail B Side	行走平行度 (见表2) Running Parallelism(Form 2)		

型号Model	FHG-45, 55		
精度等级 Precision Grade	普通级Common (C)	高级High (H)	精密级Precise (P)
高度H的容许尺寸误差 Dimension Deviation of Height H	± 0.1	± 0.07	± 0.035
宽度N的容许尺寸误差 Dimension Deviation of Width N	± 0.1	± 0.07	± 0.035
成对高度H的相互误差 Mutual Deviation of Coupled Height H	0.03	0.02	0.01
成对宽度N的相互误差 Mutual Deviation of Coupled Width N	0.03	0.025	0.015
滑块C面对导轨A面的行走平行度 Running Parallelism of Block C Side to Rail A Side	行走平行度 (见表2) Running Parallelism(Form 2)		
滑块D面对导轨B面的行走平行度 Running Parallelism of Block D Side to Rail B Side	行走平行度 (见表2) Running Parallelism(Form 2)		

Running Parallelism(Form 2)

行走平行度 (表2)

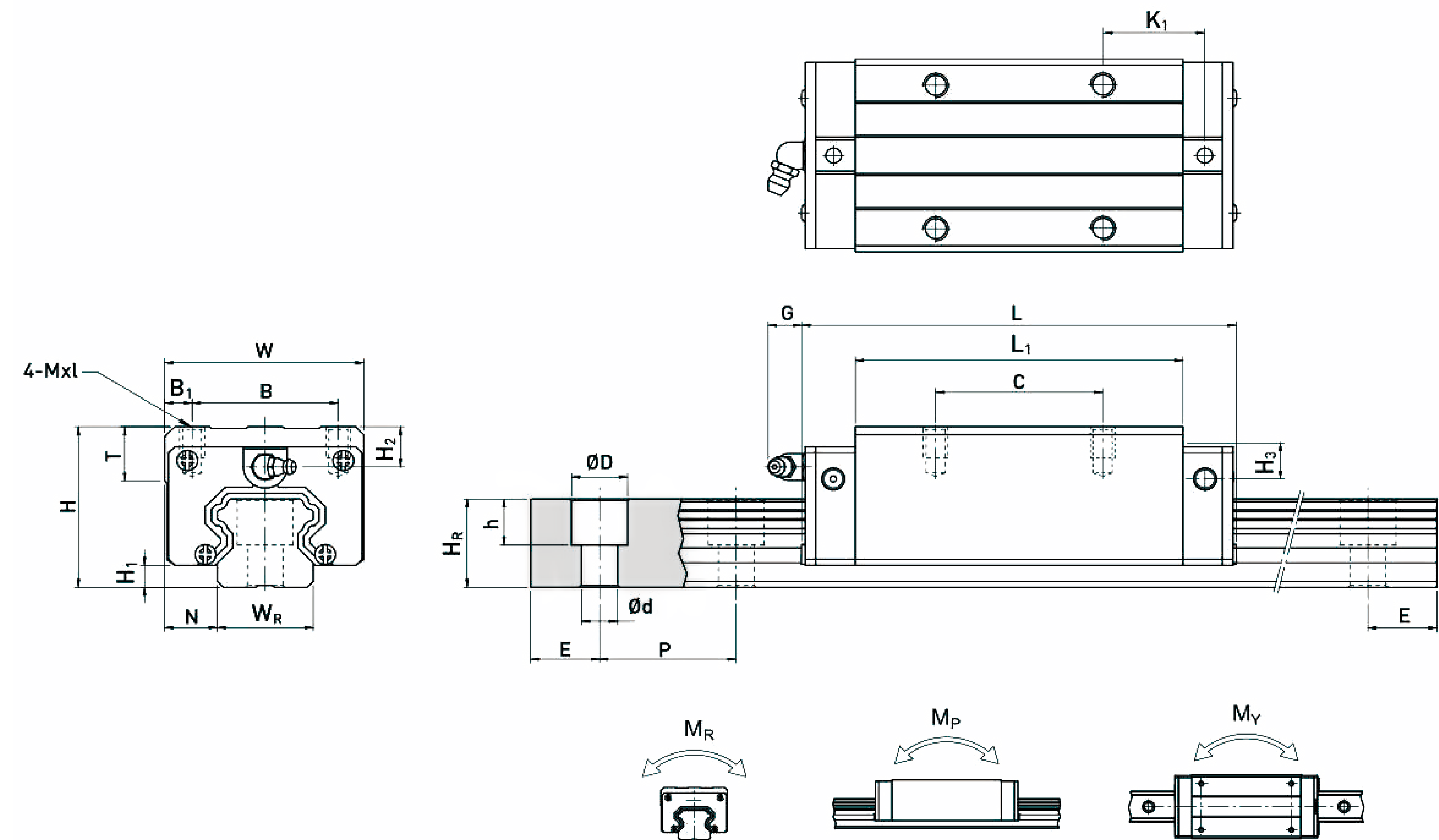
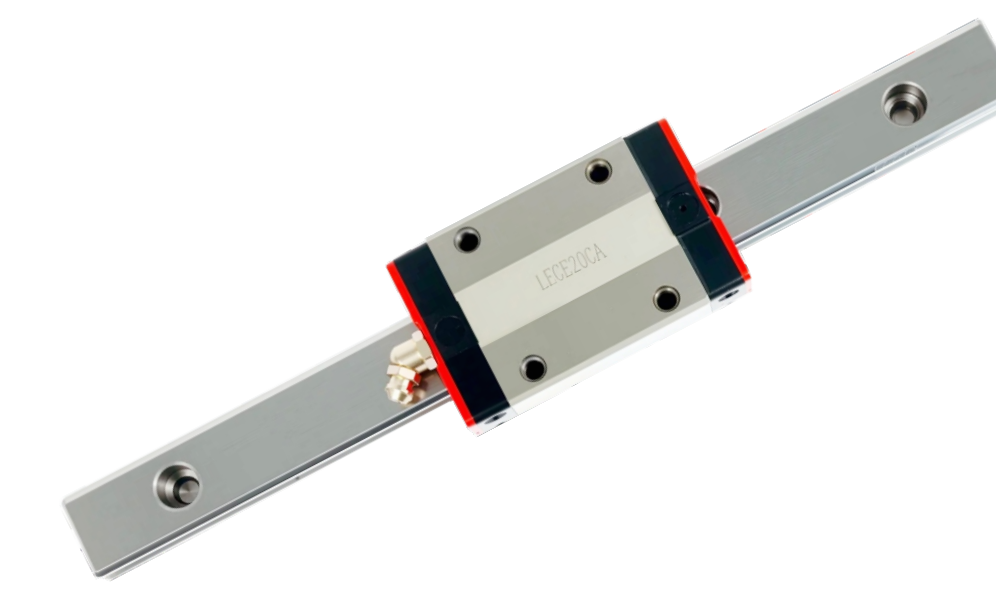
导轨长度 Rail Length (mm)	精度等级 Precision Grade				
	C	H	P	SP	UP
0 ~ 100	12	7	3	2	2
100 ~ 200	14	9	4	2	2
200 ~ 300	15	10	5	3	2
300 ~ 500	17	12	6	3	2
500 ~ 700	20	13	7	4	2
700 ~ 900	22	15	8	5	3
900 ~ 1100	24	16	9	6	3
1100 ~ 1500	26	18	11	7	4
1500 ~ 1900	28	20	13	8	4
1900 ~ 2500	31	22	15	10	5
2500 ~ 3100	33	25	18	11	6
3100 ~ 3600	36	27	20	14	7
3600 ~ 4000	37	28	21	15	7



# LINER GUIDE

## FHGH-CA/FHGH-HA

FHG-High Assembly Ball Linear Guide Rail



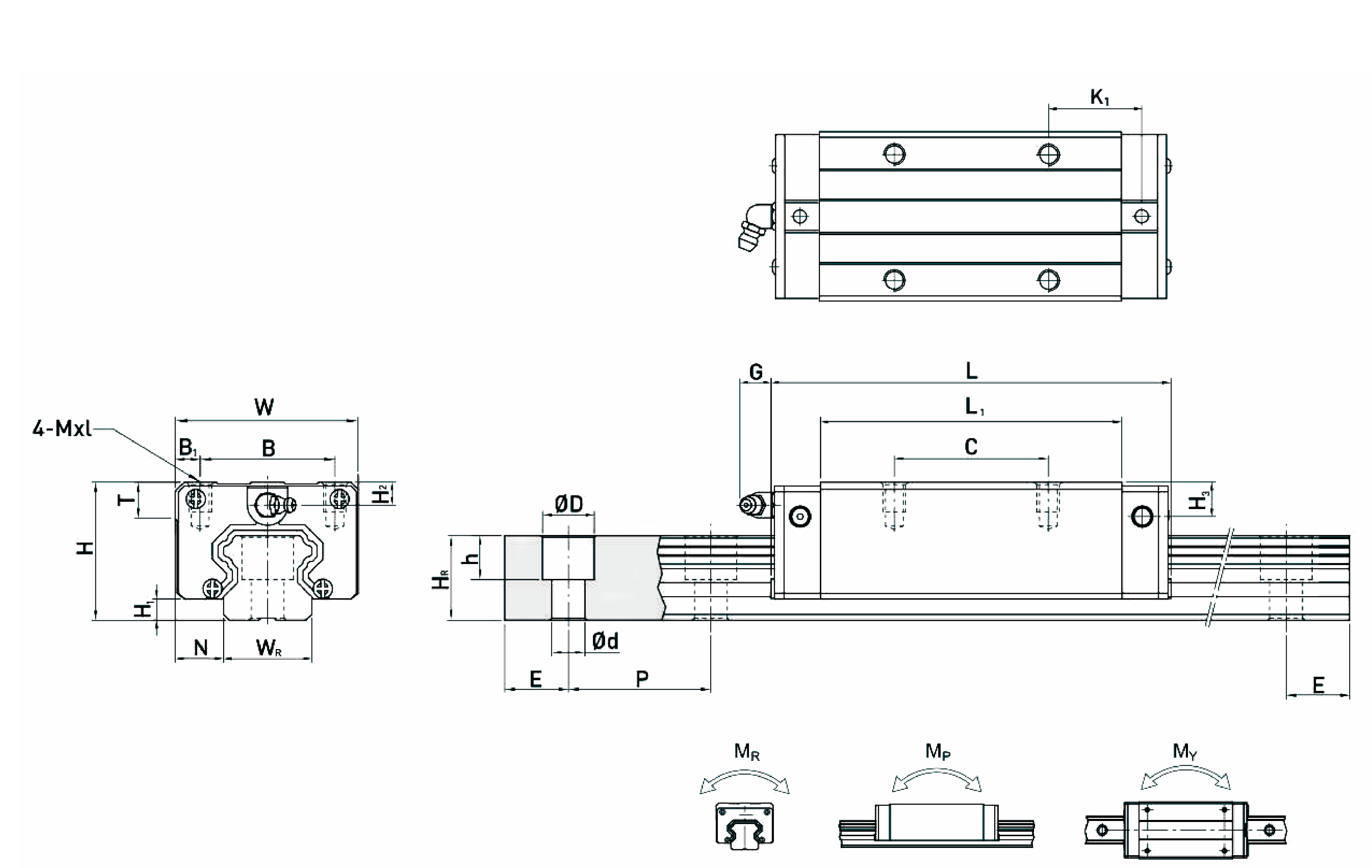
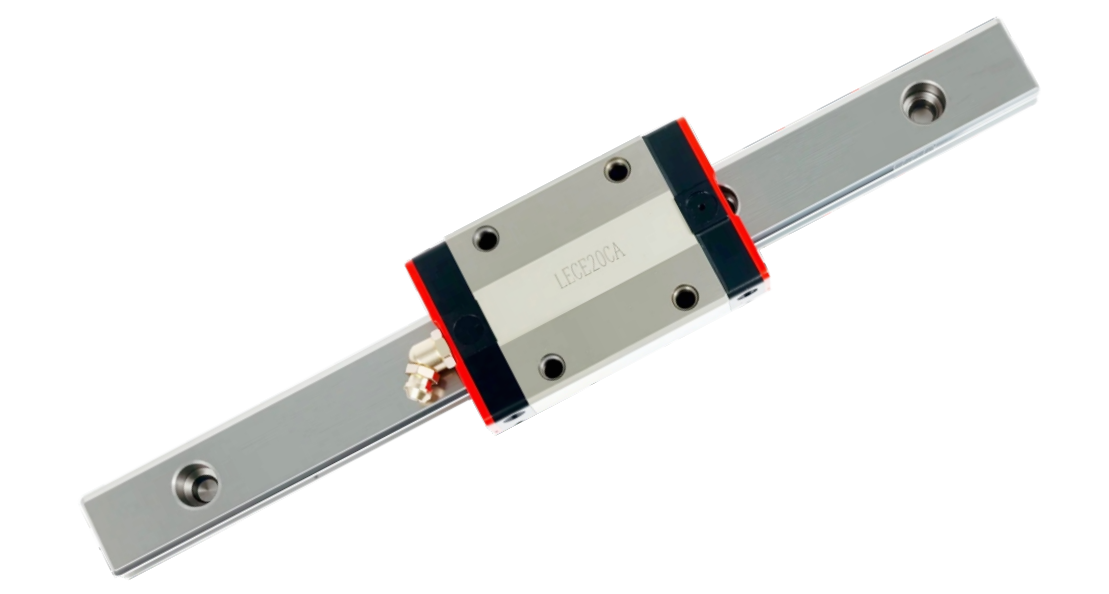
型号 Model	组件尺寸 Components Size				滑块尺寸 Block Size							导轨尺寸 Rail Size							导轨的 固定螺 丝尺寸 Fixed Screw Size	动额 定负荷 Basic Dynamic Load Rating	基本 静额 定负荷 Basic Static Rating	容许静力矩 Permissible Static Moment			重量Weight						
	H	H1	N	W	B	B1	C	L1	L	K1	G	MxL	T	H2	H3	WR	HR	D				h	d	P	E	(mm)	C(kN)	C0(kN)	WR	MP	MY
FHGH15CA	28	4.3	9.5	34	26	4	26	39.4	61.4	10	5.3	M4x5	6	7.95	7.7	15	15	7.5	5.3	4.5	60	20	M4x16	11.38	25.31	0.17	0.15	0.15	0.18	1.45	
FHGH20CA	30	4.6	12	44	32	6	36	50.5	77.5	12.25	12	M5x6	8	6	7	20	17.5	9.5	8.5	6	60	20	M5x16	17.75	37.84	0.38	0.27	0.27	0.30	2.21	
FHGH20HA							50	65.2	92.2	12.6														21.18	48.84	0.48	0.47	0.47	0.39		
FHGH25CA	40	5.5	12.5	48	35	6.5	35	58	84	16.8	12	M6x8	8	10	13	23	22	11	9	7	60	20	M6x20	26.48	56.19	0.64	0.51	0.51	0.51	3.21	
FHGH25HA							50	78.6	104.6	19.6														32.75	76.00	0.87	0.88	0.88	0.69		
FHGH30CA	45	6	16	60	40	10	40	70	97.4	20.25	12	M8x10	8.5	9.5	13.8	28	26	14	12	9	80	20	M8x25	38.74	83.06	1.06	0.85	0.85	0.88	4.47	
FHGH30HA							60	93	120.4	21.75														47.27	110.13	1.40	1.47	1.47	1.16		
FHGH35CA	55	7.5	18	70	50	10	50	80	112.4	20.6	12	M8x12	10.2	16	19.6	34	29	14	12	9	80	20	M8x25	49.52	102.87	1.73	1.20	1.20	1.45	6.30	
FHGH35HA							72	105.8	138.2	22.5														60.21	136.31	2.29	2.08	2.08	1.92		
FHGH45CA	70	9.5	20.5	86	60	13	60	97	139.4	23	12.9	M10x17	16	18.5	30.5	45	38	20	17	14	105	22.5	M12x35	77.57	155.93	3.01	2.35	2.35	2.73	10.41	
FHGH45HA							80	128.8	171.2	28.9														94.54	207.12	4.00	4.07	4.07	3.61		
FHGH55CA	80	13	23.5	100	75	12.5	75	117.7	166.7	27.35	12.9	M12x18	17.5	22	29	53	44	23	20	16	120	30	M14x45	114.44	227.81	5.66	4.06	4.06	4.17	15.08	
FHGH55HA							95	155.8	204.8	36.4														139.35	301.26	7.49	7.01	7.01	5.49		
FHGH65CA	90	15	31.5	126	76	25	70	144.2	200.2	43.1	12.9	M16x20	25	15	15	63	53	26	22	18	150	35	M16x50	163.63	324.71	10.02	6.44	6.44	7.00	21.18	
FHGH65HA							120	203.6	259.6	47.8														208.36	457.15	14.15	11.12	11.12	9.82		

注: 1kgf=9.81N

# LINER GUIDE

## FHGL-CA/FHGH-HA

FHG-High Assembly Ball Linear Guide Rail



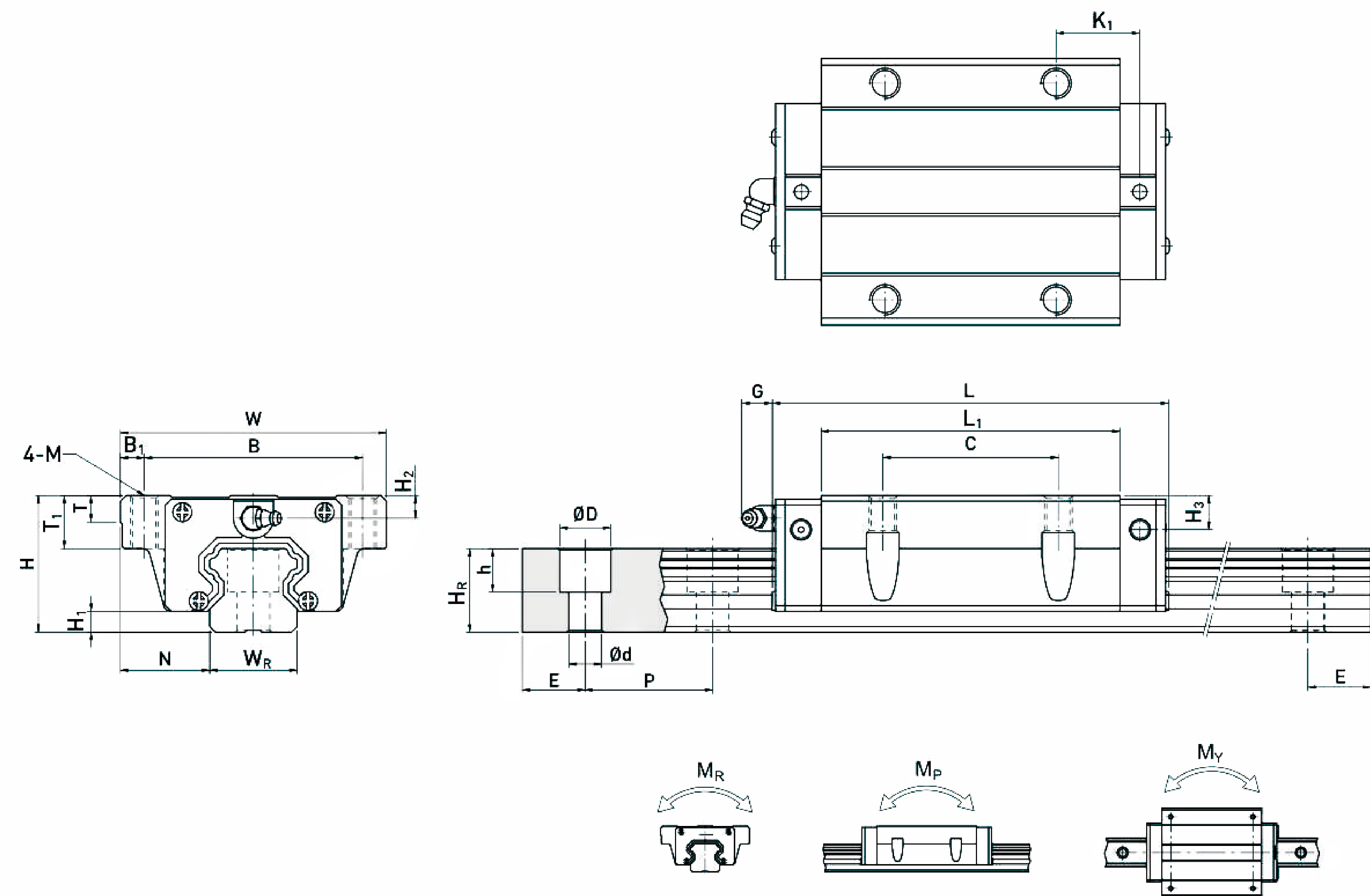
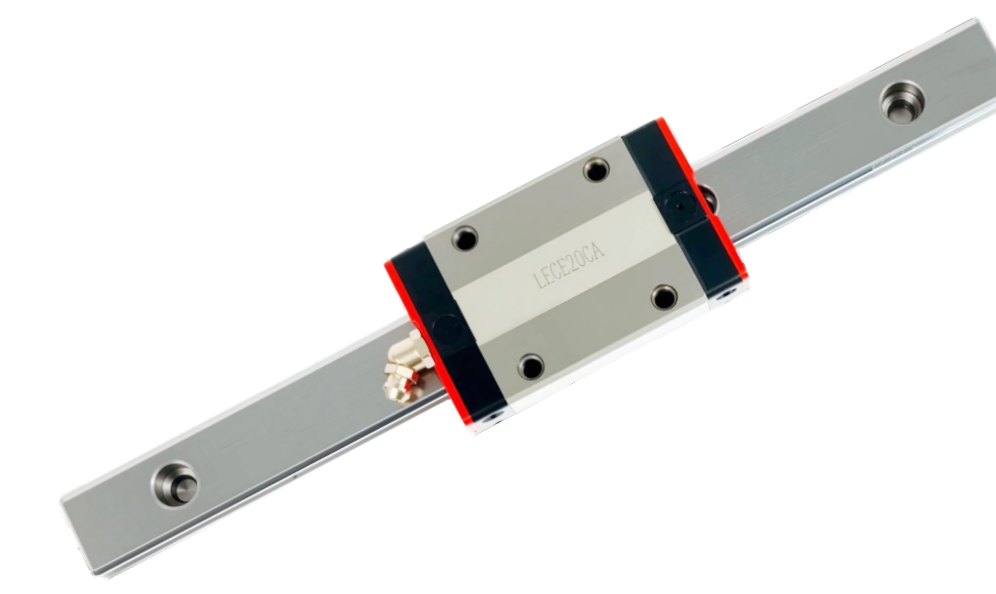
型号 Model	组件尺寸 Components Size				滑块尺寸 Block Size							导轨尺寸 Rail Size							导轨的 固定螺 丝尺寸 Fixed Screw Size	基本 动额 定负荷 Basic Dynamic Load Rating	基本 静额 定负荷 Basic Static Rating	容许静力矩 Permissible Static Moment			重量Weight						
	H	H1	N	W	B	B1	C	L1	L	K1	G	MxL	T	H2	H3	WR	HR	D				h	d	P	E	(mm)	C(kN)	C0(kN)	WR	MP	MY
FHGL15CA	24	4.3	9.5	34	26	4	26	39.4	61.4	10	5.3	M4x4	6	3.95	3.7	15	15	7.5	5.3	4.5	60	20	M4x16	11.38	25.31	0.17	0.15	0.15	0.14	1.45	
FHGL25CA	36	5.5	12.5	48	35	6.5	35	58	84	16.8	12	M6x6	8	6	9	23	22	11	9	7	60	20	M6x20	26.48	56.19	0.64	0.51	0.51	0.42	3.21	
FHGL25HA							50	78.6	104.6	19.6														32.75	76.00	0.87	0.88	0.88	0.57		
FHGL30CA	42	6	16	60	40	10	40	70	97.4	20.25	12	M8x10	8.5	6.5	10.8	28	26	14	12	9	80	20	M8x25	38.74	83.06	1.06	0.85	0.85	0.78	4.47	
FHGL30HA							60	93	120.4	21.75														47.27	110.13	1.40	1.47	1.47	1.03		
FHGL35CA	48	7.5	18	70	50	10	50	80	112.4	20.6	12	M8x12	10.2	9	12.6	34	29	14	12	9	80	20	M8x25	49.52	102.87	1.73	1.20	1.20	1.14	6.30	
FHGL35HA							72	105.8	138.2	22.5														60.21	136.31	2.29	2.08	2.08	1.52		
FHGL45CA	60	9.5	20.5	86	60	13	60	97	139.4	23	12.9	M10x17	16	8.5	20.5	45	38	20	17	14	105	22.5	M12x35	77.57	155.93	3.01	2.35	2.35	2.08	10.41	
FHGL45HA							80	128.8	171.2	28.9														94.54	207.12	4.00	4.07	4.07	2.75		
FHGL55CA	70	13	23.5	100	75	12.5	75	117.7	166.7	27.35	12.9	M12x18	17.5	12	19	53	44	23	20	16	120	30	M14x45	114.44	227.81	5.66	4.06	4.06	3.25	15.08	
FHGL55HA							95	155.8	204.8	36.4														139.35	301.26	7.49	7.01	7.01	4.27		

注: 1kgf=9.81N

# LINER GUIDE

## FHW-CA/FHW-HA

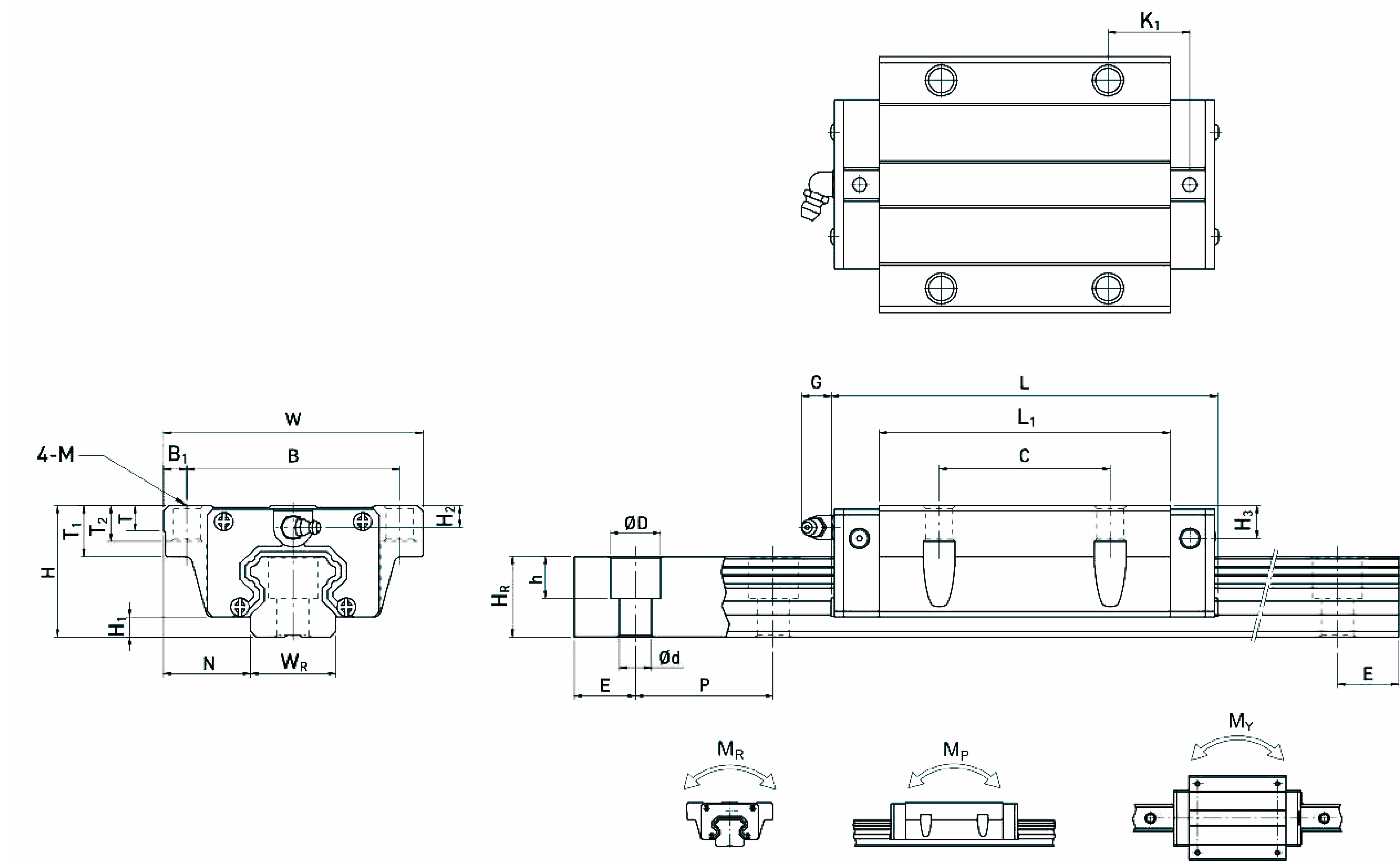
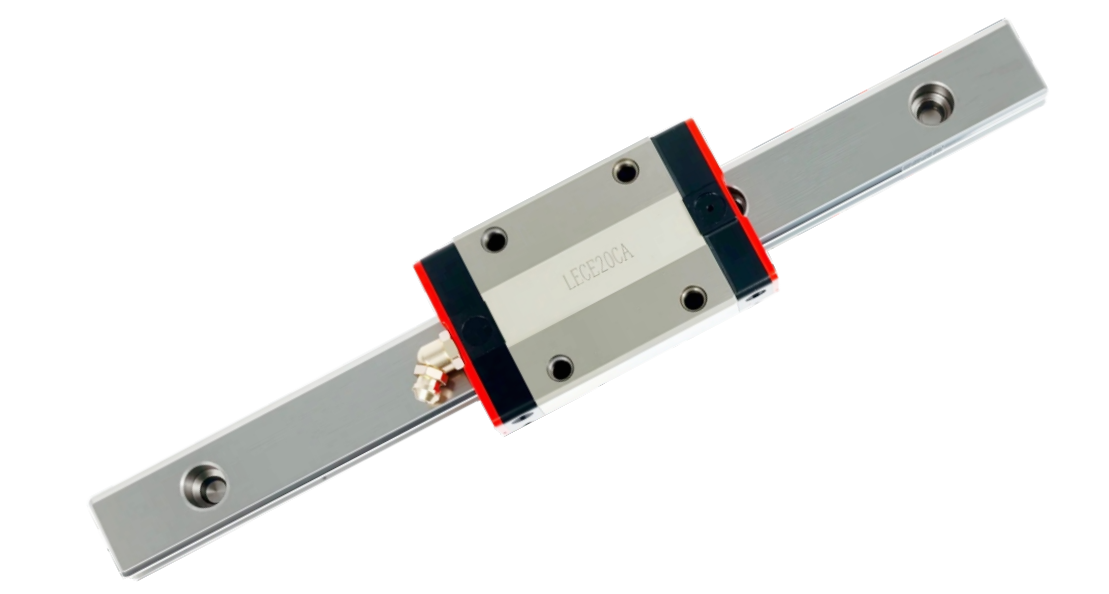
FHW-High Assembly Ball Linear Guide Rail



# LINER GUIDE

## FHW-CB/FHW-HB

FHW-High Assembly Ball Linear Guide Rail



型号 Model	组件尺寸 Components Size				滑块尺寸 Block Size				导轨尺寸 Rail Size				导轨的 固定螺 栓尺寸 Fixed Screw Size	基本 动额 定负荷 Basic Dynamic Load Rating	基本 静额 定负荷 Basic Static Rating	容许静力矩 Permissible Static Moment			重量Weight													
	H	H1	N	W	B	B1	C	L1	L	K1	G	M				T	T1	H2	H3	WR	HR	D	h	d	P	E	(mm)	(kN)	(kN)	WR	MR	MY
FHW15CA	24	4.3	16	47	38	4.5	30	39.4	61.4	8	5.3	M5	6	8.9	3.95	3.7	15	15	7.5	5.3	4.5	60	20	M4x16	11.38	25.31	0.17	0.15	0.15	0.17	1.45	
FHW20CA	30	4.6	21.5	63	53	5	40	50.5	77.5	10.25	12	M6	8	10	6	7	20	17.5	9.5	8.5	6	60	20	M5x16	17.75	37.84	0.38	0.27	0.27	0.40	2.21	
FHW20HA								65.2	92.2	17.6															21.18	48.84	0.48	0.47	0.47	0.52		
FHW25CA	36	5.5	23.5	70	57	6.5	45	58	84	11.8	12	M8	8	14	6	9	23	22	11	9	7	60	20	M6x20	26.48	56.19	0.64	0.51	0.51	0.59	3.21	
FHW25HA								78.6	104.6	22.1															32.75	76.00	0.87	0.88	0.88	0.80		
FHW30CA	42	6	31	90	72	9	52	70	97.4	14.25	12	M10	8.5	16	6.5	10.8	28	26	14	12	9	80	20	M8x25	38.74	83.06	1.06	0.85	0.85	1.09	4.47	
FHW30HA								93	120.4	25.75															47.27	110.13	1.40	1.47	1.47	1.44		
FHW35CA	48	7.5	33	100	82	9	62	80	112.4	14.6	12	M10	10.1	18	9	12.6	34	29	14	12	9	80	20	M8x25	49.52	102.87	1.73	1.20	1.20	1.56	6.30	
FHW35HA								105.8	138.2	27.5															60.21	136.31	2.29	2.08	2.08	2.06		
FHW45CA	60	9.5	37.5	120	100	10	80	97	139.4	13	12.9	M12	15.1	22	8.5	20.5	45	38	20	17	14	105	22.5	M12x35	77.57	155.93	3.01	2.35	2.35	2.79	10.41	
FHW45HA								128.8	171.2	28.9															94.54	207.12	4.00	4.07	4.07	3.69		
FHW55CA	70	13	43.5	140	116	12	95	114.4	166.7	17.35	12.9	M14	17.5	26.5	12	19	53	44	23	20	16	120	30	M14x45	114.44	227.81	5.66	4.06	4.06	4.52	15.08	
FHW55HA								155.8	204.8	36.4															139.35	301.26	7.49	7.01	7.01	5.96		
FHW65CA	90	15	53.5	170	142	14	110	144.2	200.2	23.1	12.9	M16	25	37.5	15	15	63	53	26	22	18	150	35	M16x50	163.63	324.71	10.02	6.44	6.44	9.17	21.18	
FHW65HA								203.6	259.6	52.8															208.36	457.15	14.15	11.12	11.12	12.89		

注: 1kgf=9.81N

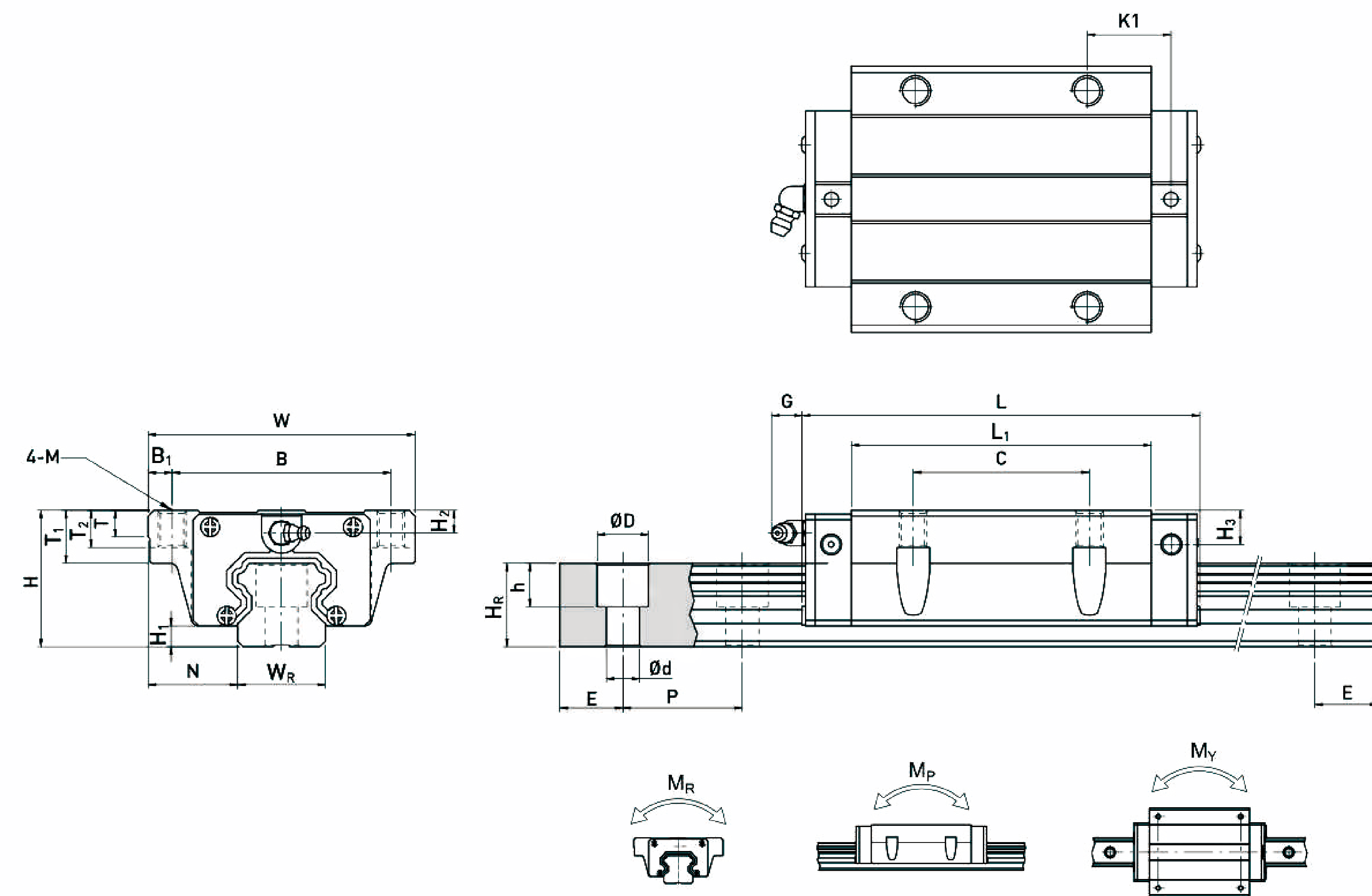
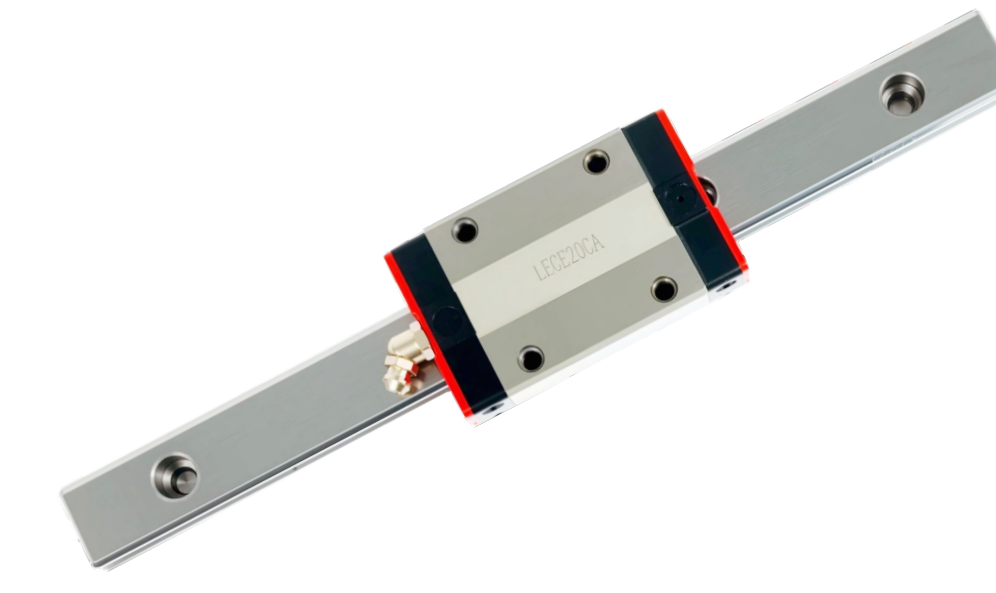
型号 Model	组件尺寸 Components Size				滑块尺寸 Block Size				导轨尺寸 Rail Size				导轨的 固定螺 栓尺寸 Fixed Screw Size	基本 动额 定负荷 Basic Dynamic Load Rating	基本 静额 定负荷 Basic Static Rating	容许静力矩 Permissible Static Moment			重量Weight													
	H	H1	N	W	B	B1	C	L1	L	K1	G	M				T	T1	H2	H3	WR	HR	D	h	d	P	E	(mm)	(kN)	(kN)	WR	MR	MY
FHW15CB	24	4.3	16	47	38	4.5	30	39.4	61.4	8	5.3	φ4.5	6	8.9	3.95	3.7	15	15	7.5	5.3	4.5	60	20	M4x16	11.38	25.31	0.17	0.15	0.15	0.17	1.45	
FHW20CB	30	4.6	21.5	63	53	5	40	50.5	77.5	10.25	12	φ6	8	10	6	7	20	17.5	9.5	8.5	6	60	20	M5x16	17.75	37.84	0.38	0.27	0.27	0.40	2.21	
FHW20HB								65.2	92.2	17.6															21.18	48.84	0.48	0.47	0.47	0.52		
FHW25CB	36	5.5	23.5	70	57	6.5	45	58	84	11.8	12	φ7	8	14	6	9	23	22	11	9	7	60	20	M6x20	26.48	56.19	0.64	0.51	0.51	0.59	3.21	
FHW25HB								78.6	104.6	22.1															32.75	76.00	0.87	0.88	0.88	0.80		
FHW30CB	42	6	31	90	72	9	52	70	97.4	14.25	12	φ9	8.5	16	6.5	10.8	28	26	14	12	9	80	20	M8x25	38.74	83.06	1.06	0.85	0.85	1.09	4.47	
FHW30HB								93	120.4	25.75															47.27	110.13	1.40	1.47	1.47	1.44		
FHW35CB	48	7.5	33	100	82	9	62	80	112.4	14.6	12	φ9	10.1	18	9	12.6	34	29	14	12	9	80	20	M8x25	49.52	102.87	1.73	1.20	1.20	1.56	6.30	
FHW35HB								105.8	138.2	27.5															60.21	136.31	2.29	2.08	2.08	2.06		
FHW45CB	60	9.5	37.5	120	100	10	80	97	139.4	13	12.9	φ11	15.1	22	8.5	20.5	45	38	20	17	14	105	22.5	M12x35	77.57	155.93	3.01	2.35	2.35	2.79	10.41	
FHW45HB								128.8	171.2	28.9															94.54	207.12	4.00	4.07	4.07	3.69		
FHW55CB	70	13	43.5	140	116	12	95	114.4	166.7	17.35	12.9	φ14	17.5	26.5	12	19	53	44	23	20	16	120	30	M14x45	114.44	227.81	5.66	4.06	4.06	4.52	15.08	
FHW55HB								155.8	204.8	36.4															139.35	301.26	7.49	7.01	7.01	5.96		
FHW65CB	90	15	53.5	170	142	14	110	144.2	200.2	23.1	12.9	φ16	25	37.5	15	15	63	53	26	22	18	150	35	M16x50	163.63	324.71	10.02	6.44	6.44	9.17	21.18	
FHW65HB								203.6	259.6	52.8															208.36	457.15	14.15	11.12	11.12	12.89		

注: 1kgf=9.81N

# LINER GUIDE

## FHW-CC/FHW-HC

FHW-High Assembly Ball Linear Guide Rail



型号 Model	组件尺寸 Components Size				滑块尺寸 Block Size				导轨尺寸 Rail Size											导轨的 固定螺 栓尺寸 Fixed Screw Size	基本 动额 定负荷 Basic Dynamic Load Rating	基本 静额 定负荷 Basic Static Rating	容许静力矩 Permissible Static Moment			重量Weight					
	H	H1	N	W	B	B1	C	L1	L	K1	G	M	T	T1	H2	H3	WR	HR	D				h	d	P	E	(mm)	C(kN)	CO(kN)	WR KN-m	MR KN-m
FHW15CC	24	4.3	16	47	38	4.5	30	39.4	61.4	8	5.3	M5	6	8.9	3.95	3.7	15	15	7.5	5.3	4.5	60	20	M4x16	11.38	25.31	0.17	0.15	0.15	0.17	1.45
FHW20CC	30	4.6	21.5	63	53	5	40	50.5	77.5	10.25	12	M6	8	10	6	7	20	17.5	9.5	8.5	6	60	20	M5x16	17.75	37.84	0.38	0.27	0.27	0.40	2.21
FHW20HC								65.2	92.2	17.6															21.18	48.84	0.48	0.47	0.47	0.52	
FHW25CC	36	5.5	23.5	70	57	6.5	45	58	84	11.8	12	M8	8	14	6	9	23	22	11	9	7	60	20	M6x20	26.48	56.19	0.64	0.51	0.51	0.59	3.21
FHW25HC								78.6	104.6	22.1															32.75	76.00	0.87	0.88	0.88	0.80	
FHW30CC	42	6	31	90	72	9	52	70	97.4	14.25	12	M10	8.5	16	6.5	10.8	28	26	14	12	9	80	20	M8x25	38.74	83.06	1.06	0.85	0.85	1.09	4.47
FHW30HC								93	120.4	25.75															47.27	110.13	1.40	1.47	1.47	1.44	
FHW35CC	48	7.5	33	100	82	9	62	80	112.4	14.6	12	M10	10.1	18	9	12.6	34	29	14	12	9	80	20	M8x25	49.52	102.87	1.73	1.20	1.20	1.56	6.30
FHW35HC								105.8	138.2	27.5															60.21	136.31	2.29	2.08	2.08	2.06	
FHW45CC	60	9.5	37.5	120	100	10	80	97	139.4	13	12.9	M12	15.1	22	8.5	20.5	45	38	20	17	14	105	22.5	M12x35	77.57	155.93	3.01	2.35	2.35	2.79	10.41
FHW45HC								128.8	171.2	28.9															94.54	207.12	4.00	4.07	4.07	3.69	
FHW55CC	70	13	43.5	140	116	12	95	117.7	166.7	17.35	12.9	M14	17.5	26.5	12	19	53	44	23	20	16	120	30	M14x45	114.44	227.81	5.66	4.06	4.06	4.52	15.08
FHW55HC								155.8	204.8	36.4															139.35	301.26	7.49	7.01	7.01	5.96	
FHW65CC	90	15	53.5	170	142	14	110	144.2	200.2	23.1	12.9	M16	25	37.5	15	15	63	53	26	22	18	150	35	M16x50	163.63	324.71	10.02	6.44	6.44	9.17	21.18
FHW65HC								203.6	259.6	52.8															208.36	457.15	14.15	11.12	11.12	12.89	

注: 1kgf=9.81N